

Product datasheet for **TA315122**

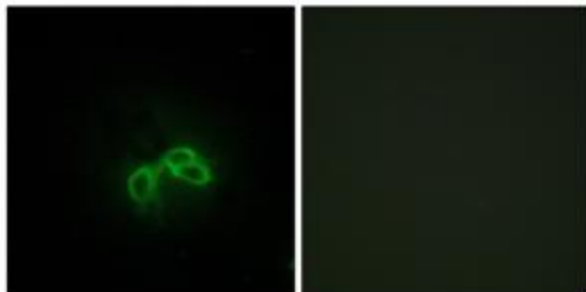
BLCAP Rabbit Polyclonal Antibody

Product data:

Product Type:	Primary Antibodies
Applications:	IF
Recommended Dilution:	IF: 1:100~1:500, ELISA: 1:40000
Reactivity:	Human, Mouse, Rat
Host:	Rabbit
Isotype:	IgG
Clonality:	Polyclonal
Immunogen:	The antiserum was produced against synthesized peptide derived from internal of human BLCAP.
Formulation:	Phosphate buffered saline (without Mg ²⁺ and Ca ²⁺), pH 7.4, 150mM NaCl, 0.02% sodium azide and 50% glycerol.
Concentration:	lot specific
Purification:	The antibody was affinity-purified from rabbit antiserum by affinity-chromatography using epitope-specific immunogen.
Conjugation:	Unconjugated
Storage:	Store at -20°C as received.
Stability:	Stable for 12 months from date of receipt.
Gene Name:	bladder cancer associated protein
Database Link:	NP_006689 Entrez Gene 53619 Mouse Entrez Gene 171113 Rat Entrez Gene 10904 Human P62952
Synonyms:	BC10
Note:	BLCAP antibody detects endogenous levels of total BLCAP protein.
Protein Families:	Transmembrane



[View online »](#)

Product images:

Immunofluorescence analysis of 3T3 cells, using BLCAP antibody. The picture on the right is treated with the synthesized peptide.