

Product datasheet for **TA315121**

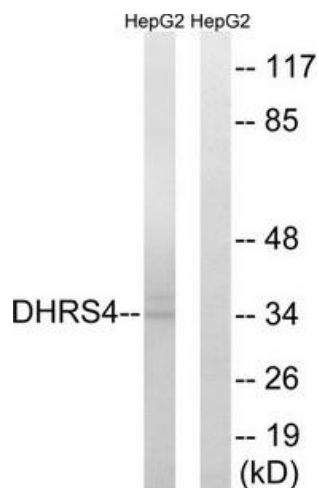
DHRS4 Rabbit Polyclonal Antibody

Product data:

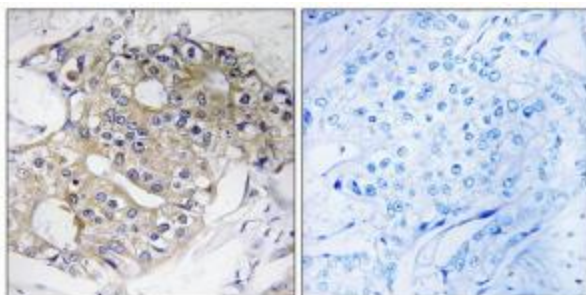
Product Type:	Primary Antibodies
Applications:	IHC, WB
Recommended Dilution:	WB: 1:500~1:3000, IHC: 1:50~1:100, ELISA: 1:5000
Reactivity:	Human
Host:	Rabbit
Isotype:	IgG
Clonality:	Polyclonal
Immunogen:	The antiserum was produced against synthesized peptide derived from internal of human DHRS4.
Formulation:	Phosphate buffered saline (without Mg ²⁺ and Ca ²⁺), pH 7.4, 150mM NaCl, 0.02% sodium azide and 50% glycerol.
Concentration:	lot specific
Purification:	The antibody was affinity-purified from rabbit antiserum by affinity-chromatography using epitope-specific immunogen.
Conjugation:	Unconjugated
Storage:	Store at -20°C as received.
Stability:	Stable for 12 months from date of receipt.
Gene Name:	dehydrogenase/reductase 4
Database Link:	NP_066284 Entrez Gene 10901 Human Q9BTZ2
Synonyms:	CR; NRDR; PHCR; PSCD; SCAD-SRL; SDR-SRL; SDR25C1; SDR25C2
Note:	DHRS4 antibody detects endogenous levels of total DHRS4 protein.
Protein Families:	Druggable Genome
Protein Pathways:	Metabolic pathways, Retinol metabolism



[View online »](#)

Product images:

Western blot analysis of extracts from HepG2 cells, using DHRS4 antibody. The lane on the right is treated with the synthesized peptide.



Immunohistochemistry analysis of paraffin-embedded human breast carcinoma tissue, using DHRS4 antibody. The picture on the right is treated with the synthesized peptide.