

## Product datasheet for **TA315116**

### ME3 Rabbit Polyclonal Antibody

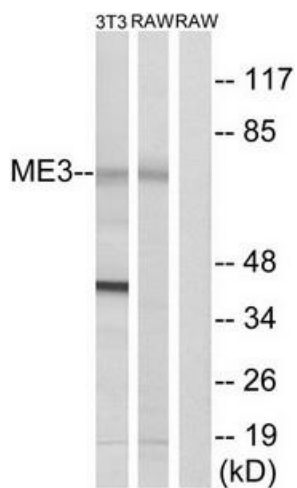
#### Product data:

Product Type:	Primary Antibodies
Applications:	WB
Recommended Dilution:	WB: 1:500~1:3000, ELISA: 1:40000
Reactivity:	Human, Mouse
Host:	Rabbit
Isotype:	IgG
Clonality:	Polyclonal
Immunogen:	The antiserum was produced against synthesized peptide derived from internal of human ME3.
Formulation:	Phosphate buffered saline (without Mg <sup>2+</sup> and Ca <sup>2+</sup> ), pH 7.4, 150mM NaCl, 0.02% sodium azide and 50% glycerol.
Concentration:	lot specific
Purification:	The antibody was affinity-purified from rabbit antiserum by affinity-chromatography using epitope-specific immunogen.
Conjugation:	Unconjugated
Storage:	Store at -20°C as received.
Stability:	Stable for 12 months from date of receipt.
Gene Name:	malic enzyme 3
Database Link:	<a href="#">NP_001014811</a> <a href="#">Entrez Gene 109264 Mouse</a> <a href="#">Entrez Gene 10873 Human</a> <a href="#">Q16798</a>
Synonyms:	NADP-ME
Note:	ME3 antibody detects endogenous levels of total ME3 protein.
Protein Pathways:	Metabolic pathways, Pyruvate metabolism



[View online »](#)

## Product images:



Western blot analysis of extracts from 3T3 cells and RAW264.7 cells, using ME3 antibody. The lane on the right is treated with the synthesized peptide.