

## Product datasheet for **TA315112**

### FRS2 Rabbit Polyclonal Antibody

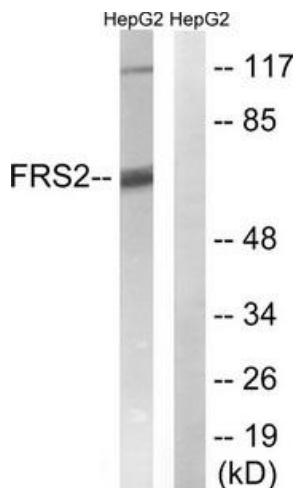
#### Product data:

Product Type:	Primary Antibodies
Applications:	WB
Recommended Dilution:	WB: 1:500~1:3000, ELISA: 1:40000
Reactivity:	Human, Mouse
Host:	Rabbit
Isotype:	IgG
Clonality:	Polyclonal
Immunogen:	The antiserum was produced against synthesized non-phosphopeptide derived from human FRS2 around the phosphorylation site of tyrosine 196 (H-T-YP-V-N).
Formulation:	Phosphate buffered saline (without Mg <sup>2+</sup> and Ca <sup>2+</sup> ), pH 7.4, 150mM NaCl, 0.02% sodium azide and 50% glycerol.
Concentration:	lot specific
Purification:	The antibody was affinity-purified from rabbit antiserum by affinity-chromatography using epitope-specific immunogen.
Conjugation:	Unconjugated
Storage:	Store at -20°C as received.
Stability:	Stable for 12 months from date of receipt.
Gene Name:	fibroblast growth factor receptor substrate 2
Database Link:	<a href="#">NP_001036020</a> <a href="#">Entrez Gene 327826 Mouse</a> <a href="#">Entrez Gene 10818 Human</a> <a href="#">Q8WU20</a>
Synonyms:	FRS1A; FRS2A; FRS2alpha; SNT; SNT-1; SNT1
Note:	FRS2 (Ab-196) antibody detects endogenous levels of total FRS2 protein.
Protein Families:	Druggable Genome
Protein Pathways:	Neurotrophin signaling pathway

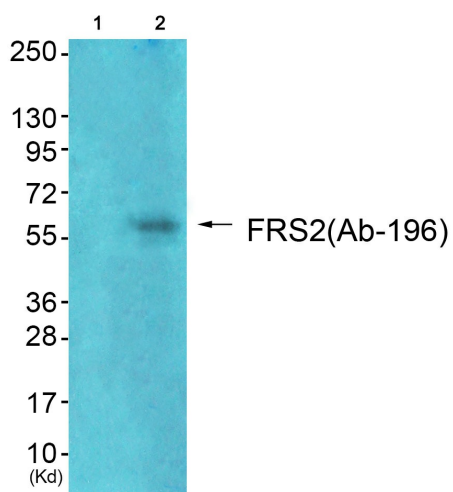


[View online »](#)

Product images:



Western blot analysis of extracts from HepG2 cells, using FRS2 (Ab-196) antibody. The lane on the right is treated with the synthesized peptide.



Western blot analysis of extracts from 293 cells (Lane 2), using FRS2 (Ab-196) Antibody. The lane on the left is treated with synthesized peptide.