

## Product datasheet for **TA315108**

### **PCTP L (STARD10) Rabbit Polyclonal Antibody**

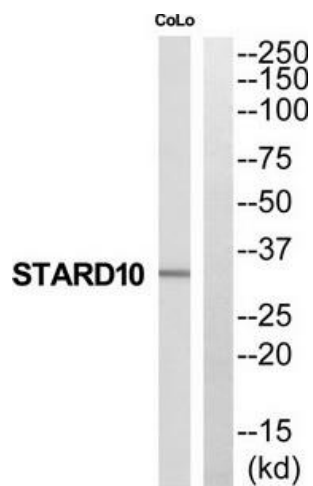
#### **Product data:**

|                              |  |
|------------------------------|--|
| <b>Product Type:</b>         | Primary Antibodies   |
| <b>Applications:</b>         | WB   |
| <b>Recommended Dilution:</b> | WB: 1:500~1:3000, ELISA: 1:40000   |
| <b>Reactivity:</b>           | Human, Mouse, Rat  |
| <b>Host:</b>                 | Rabbit   |
| <b>Isotype:</b>              | IgG  |
| <b>Clonality:</b>            | Polyclonal   |
| <b>Immunogen:</b>            | The antiserum was produced against synthesized peptide derived from N-terminal of human STARD10.                                     |
| <b>Formulation:</b>          | Phosphate buffered saline (without Mg <sup>2+</sup> and Ca <sup>2+</sup> ), pH 7.4, 150mM NaCl, 0.02% sodium azide and 50% glycerol. |
| <b>Concentration:</b>        | lot specific   |
| <b>Purification:</b>         | The antibody was affinity-purified from rabbit antiserum by affinity-chromatography using epitope-specific immunogen.                |
| <b>Conjugation:</b>          | Unconjugated   |
| <b>Storage:</b>              | Store at -20°C as received.  |
| <b>Stability:</b>            | Stable for 12 months from date of receipt.   |
| <b>Gene Name:</b>            | StAR related lipid transfer domain containing 10   |
| <b>Database Link:</b>        | <a href="#">NP_006636</a><br><a href="#">Entrez Gene 56018 MouseEntrez Gene 293150 RatEntrez Gene 10809 Human Q9Y365</a>             |
| <b>Synonyms:</b>             | CGI-52; NY-CO-28; PCTP2; SDCCAG28  |
| <b>Note:</b>                 | STARD10 antibody detects endogenous levels of total STARD10 protein.   |



[View online »](#)

## Product images:



Western blot analysis of extracts from COLO205 cells, using STARD10 antibody. The lane on the right is treated with the synthesized peptide.