

## Product datasheet for **TA315107**

### CysLT1 (CYSLTR1) Rabbit Polyclonal Antibody

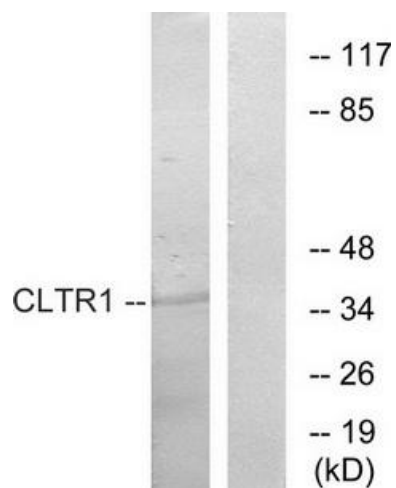
#### Product data:

Product Type:	Primary Antibodies
Applications:	IF, WB
Recommended Dilution:	WB: 1:500~1:3000, IF: 1:100~1:500, ELISA: 1:10000
Reactivity:	Human
Host:	Rabbit
Isotype:	IgG
Clonality:	Polyclonal
Immunogen:	The antiserum was produced against synthesized peptide derived from internal of human CLTR1.
Formulation:	Phosphate buffered saline (without Mg <sup>2+</sup> and Ca <sup>2+</sup> ), pH 7.4, 150mM NaCl, 0.02% sodium azide and 50% glycerol.
Concentration:	lot specific
Purification:	The antibody was affinity-purified from rabbit antiserum by affinity-chromatography using epitope-specific immunogen.
Conjugation:	Unconjugated
Storage:	Store at -20°C as received.
Stability:	Stable for 12 months from date of receipt.
Gene Name:	cysteinyl leukotriene receptor 1
Database Link:	<a href="#">NP_006630</a> <a href="#">Entrez Gene 10800 Human</a> <a href="#">Q9Y271</a>
Synonyms:	CYSLT1; CYSLT1R; CYSLTR; HMTMF81
Note:	CLTR1 antibody detects endogenous levels of total CLTR1 protein.
Protein Families:	Druggable Genome, GPCR, Transmembrane
Protein Pathways:	Calcium signaling pathway, Neuroactive ligand-receptor interaction

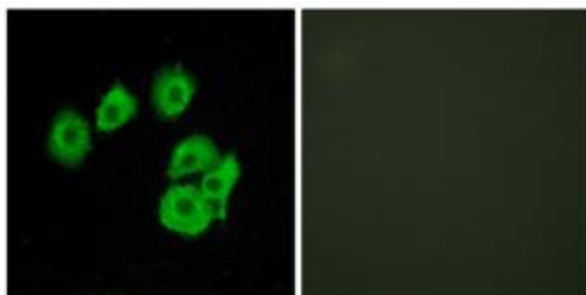


[View online »](#)

## Product images:



Western blot analysis of extracts from COS7 cells, using CLTR1 antibody. The lane on the right is treated with the synthesized peptide.



Immunofluorescence analysis of HUVEC cells, using CLTR1 antibody. The picture on the right is treated with the synthesized peptide.