

## Product datasheet for **TA315103**

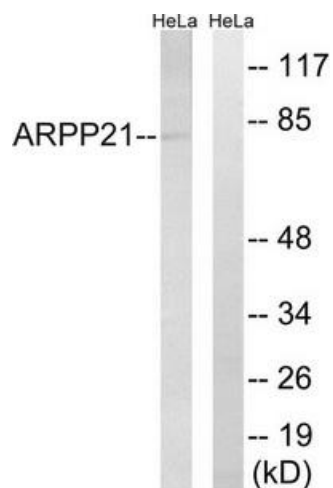
### ARPP21 Rabbit Polyclonal Antibody

#### Product data:

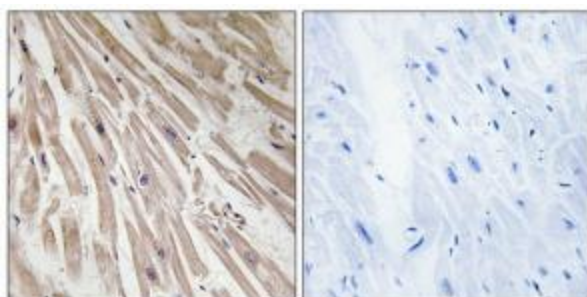
Product Type:	Primary Antibodies
Applications:	IHC, WB
Recommended Dilution:	WB: 1:500~1:3000, IHC: 1:50~1:100, ELISA: 1:5000
Reactivity:	Human, Mouse
Host:	Rabbit
Isotype:	IgG
Clonality:	Polyclonal
Immunogen:	The antiserum was produced against synthesized peptide derived from internal of human ARPP21.
Formulation:	Phosphate buffered saline (without Mg <sup>2+</sup> and Ca <sup>2+</sup> ), pH 7.4, 150mM NaCl, 0.02% sodium azide and 50% glycerol.
Concentration:	lot specific
Purification:	The antibody was affinity-purified from rabbit antiserum by affinity-chromatography using epitope-specific immunogen.
Conjugation:	Unconjugated
Storage:	Store at -20°C as received.
Stability:	Stable for 12 months from date of receipt.
Gene Name:	cAMP regulated phosphoprotein 21kDa
Database Link:	<a href="#">NP_001020239</a> <a href="#">Entrez Gene 74100 Mouse</a> <a href="#">Entrez Gene 10777 Human</a> <a href="#">Q9UBL0</a>
Synonyms:	ARPP-21; R3HDM3; RCS; TARPP
Note:	ARPP21 antibody detects endogenous levels of total ARPP21 protein.



[View online »](#)

**Product images:**


Western blot analysis of extracts from HeLa cells, using ARPP21 antibody. The lane on the right is treated with the synthesized peptide.



Immunohistochemistry analysis of paraffin-embedded human heart tissue, using ARPP21 antibody. The picture on the right is treated with the synthesized peptide.