

Product datasheet for **TA315091**

RRAGA Rabbit Polyclonal Antibody

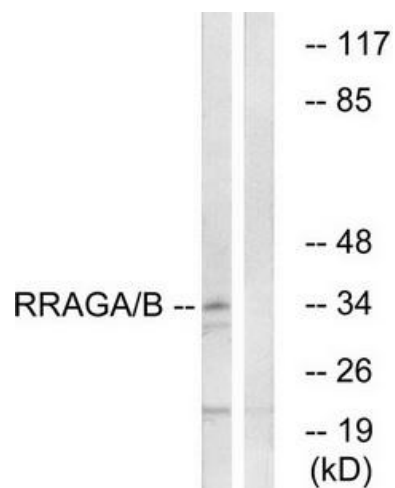
Product data:

Product Type:	Primary Antibodies
Applications:	WB
Recommended Dilution:	WB: 1:500~1:3000, ELISA: 1:20000
Reactivity:	Human, Mouse, Rat
Host:	Rabbit
Isotype:	IgG
Clonality:	Polyclonal
Immunogen:	The antiserum was produced against synthesized peptide derived from internal of human RRAGA/B.
Formulation:	Phosphate buffered saline (without Mg ²⁺ and Ca ²⁺), pH 7.4, 150mM NaCl, 0.02% sodium azide and 50% glycerol.
Concentration:	lot specific
Purification:	The antibody was affinity-purified from rabbit antiserum by affinity-chromatography using epitope-specific immunogen.
Conjugation:	Unconjugated
Storage:	Store at -20°C as received.
Stability:	Stable for 12 months from date of receipt.
Gene Name:	Ras related GTP binding A
Database Link:	NP_006561 Entrez Gene 68441 Mouse Entrez Gene 117044 Rat Entrez Gene 10670 Human Q7L523
Synonyms:	FIP-1; FIP1; RAGA
Note:	RRAGA/B antibody detects endogenous levels of total RRAGA/B protein.



[View online »](#)

Product images:



Western blot analysis of extracts from HepG2 cells, using RRAGA/B antibody. The lane on the right is treated with the synthesized peptide.