

## Product datasheet for **TA315089**

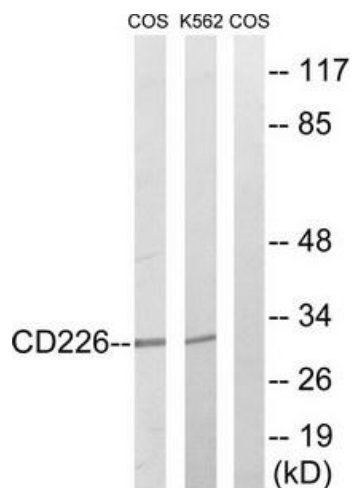
### CD226 Rabbit Polyclonal Antibody

#### Product data:

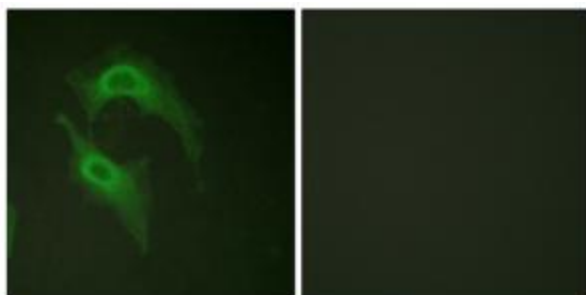
Product Type:	Primary Antibodies
Applications:	IF, WB
Recommended Dilution:	WB: 1:500~1:3000, IF: 1:100~1:500, ELISA: 1:1000
Reactivity:	Human, Mouse
Host:	Rabbit
Isotype:	IgG
Clonality:	Polyclonal
Immunogen:	The antiserum was produced against synthesized non-phosphopeptide derived from human CD226/DNAM-1 around the phosphorylation site of serine 329 (T-F-SP-R-R).
Formulation:	Phosphate buffered saline (without Mg <sup>2+</sup> and Ca <sup>2+</sup> ), pH 7.4, 150mM NaCl, 0.02% sodium azide and 50% glycerol.
Concentration:	lot specific
Purification:	The antibody was affinity-purified from rabbit antiserum by affinity-chromatography using epitope-specific immunogen.
Conjugation:	Unconjugated
Storage:	Store at -20°C as received.
Stability:	Stable for 12 months from date of receipt.
Gene Name:	CD226 molecule
Database Link:	<a href="#">NP_006557</a> <a href="#">Entrez Gene 225825 Mouse</a> <a href="#">Entrez Gene 10666 Human</a> <a href="#">Q15762</a>
Synonyms:	DNAM-1; DNAM1; PTA1; TLISA1
Note:	CD226/DNAM-1 (Ab-329) antibody detects endogenous levels of total CD226/DNAM-1 protein.
Protein Families:	Druggable Genome, Transmembrane
Protein Pathways:	Cell adhesion molecules (CAMs)



[View online »](#)

**Product images:**

Western blot analysis of extracts from 293 cells, treated with PMA (125ng/ml, 30mins), using CD226/DNAM-1 (Ab-329) antibody. The lane on the right is treated with the synthesized peptide.



Immunofluorescence analysis of HeLa cells, using CD226/DNAM-1 (Ab-329) antibody. The picture on the right is treated with the synthesized peptide.