

Product datasheet for **TA315087**

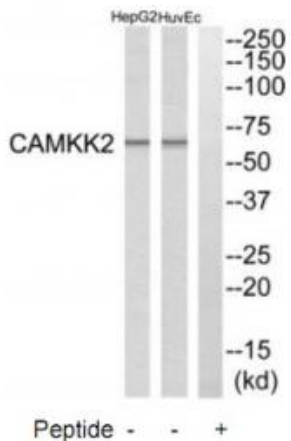
CAMKK2 Rabbit Polyclonal Antibody

Product data:

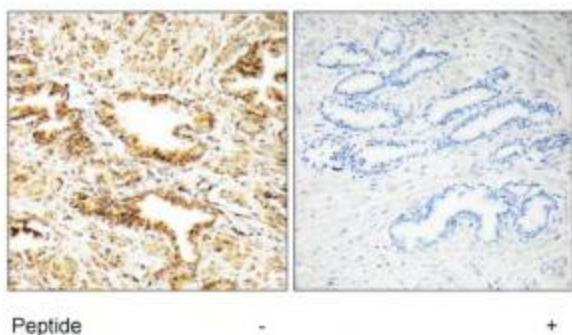
Product Type:	Primary Antibodies
Applications:	IHC, WB
Recommended Dilution:	WB: 1:500~1:3000, IHC: 1:50~1:100, ELISA: 1:10000
Reactivity:	Human, Mouse, Rat
Host:	Rabbit
Isotype:	IgG
Clonality:	Polyclonal
Immunogen:	The antiserum was produced against synthesized peptide derived from internal of human CAMKK2.
Formulation:	Phosphate buffered saline (without Mg ²⁺ and Ca ²⁺), pH 7.4, 150mM NaCl, 0.02% sodium azide and 50% glycerol.
Concentration:	lot specific
Purification:	The antibody was affinity-purified from rabbit antiserum by affinity-chromatography using epitope-specific immunogen.
Conjugation:	Unconjugated
Storage:	Store at -20°C as received.
Stability:	Stable for 12 months from date of receipt.
Gene Name:	calcium/calmodulin-dependent protein kinase kinase 2
Database Link:	NP_757380 Entrez Gene 83506 Rat Entrez Gene 207565 Mouse Entrez Gene 10645 Human Q96RR4
Synonyms:	CAMKK; CAMKKB
Note:	CAMKK2 antibody detects endogenous levels of total CAMKK2 protein.
Protein Families:	Druggable Genome, Protein Kinase, Transcription Factors
Protein Pathways:	Adipocytokine signaling pathway



[View online »](#)

Product images:


Western blot analysis of extracts from HuvEc cells and HepG2 cells, using CAMKK2 antibody. The lane on the right is treated with the synthesized peptide.



Immunohistochemistry analysis of paraffin-embedded human prostate carcinoma tissue, using CAMKK2 antibody. The picture on the right is treated with the synthesized peptide.