

## Product datasheet for **TA315084**

### TAF6L Rabbit Polyclonal Antibody

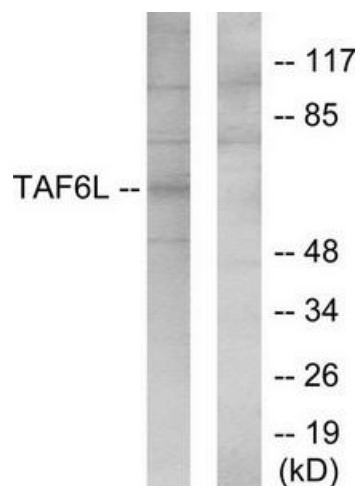
#### Product data:

|                       |   |
|-----------------------|---|
| Product Type:         | Primary Antibodies  |
| Applications:         | WB  |
| Recommended Dilution: | WB: 1:500~1:3000, ELISA: 1:40000  |
| Reactivity:           | Human, Mouse  |
| Host:                 | Rabbit  |
| Isotype:              | IgG   |
| Clonality:            | Polyclonal  |
| Immunogen:            | The antiserum was produced against synthesized peptide derived from internal of human TAF6L.  |
| Formulation:          | Phosphate buffered saline (without Mg <sup>2+</sup> and Ca <sup>2+</sup> ), pH 7.4, 150mM NaCl, 0.02% sodium azide and 50% glycerol.    |
| Concentration:        | lot specific  |
| Purification:         | The antibody was affinity-purified from rabbit antiserum by affinity-chromatography using epitope-specific immunogen.                   |
| Conjugation:          | Unconjugated  |
| Storage:              | Store at -20°C as received.   |
| Stability:            | Stable for 12 months from date of receipt.  |
| Gene Name:            | TATA-box binding protein associated factor 6 like   |
| Database Link:        | <a href="#">NP_006464</a><br><a href="#">Entrez Gene 225895 Mouse</a> <a href="#">Entrez Gene 10629 Human</a><br><a href="#">Q9Y6J9</a> |
| Synonyms:             | PAF65A  |
| Note:                 | TAF6L antibody detects endogenous levels of total TAF6L protein.  |
| Protein Families:     | Transcription Factors   |
| Protein Pathways:     | Basal transcription factors   |



[View online »](#)

## Product images:



Western blot analysis of extracts from 293 cells, using TAF6L antibody. The lane on the right is treated with the synthesized peptide.