

Product datasheet for **TA315081**

CDC42EP3 Rabbit Polyclonal Antibody

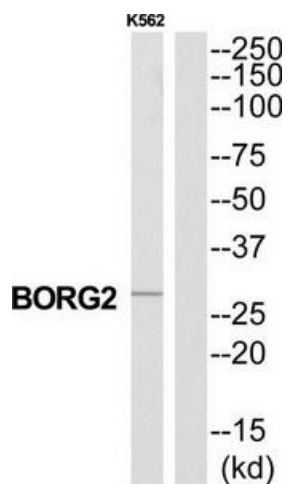
Product data:

Product Type:	Primary Antibodies
Applications:	WB
Recommended Dilution:	WB: 1:500~1:3000, ELISA: 1:40000
Reactivity:	Human, Mouse, Rat
Host:	Rabbit
Isotype:	IgG
Clonality:	Polyclonal
Immunogen:	The antiserum was produced against synthesized peptide derived from N-terminal of human CDC42EP3.
Formulation:	Phosphate buffered saline (without Mg ²⁺ and Ca ²⁺), pH 7.4, 150mM NaCl, 0.02% sodium azide and 50% glycerol.
Concentration:	lot specific
Purification:	The antibody was affinity-purified from rabbit antiserum by affinity-chromatography using epitope-specific immunogen.
Conjugation:	Unconjugated
Storage:	Store at -20°C as received.
Stability:	Stable for 12 months from date of receipt.
Gene Name:	CDC42 effector protein 3
Database Link:	NP_006440 Entrez Gene 260409 MouseEntrez Gene 313838 RatEntrez Gene 10602 Human Q9UKI2
Synonyms:	BORG2; CEP3; UB1
Note:	CDC42EP3 antibody detects endogenous levels of total CDC42EP3 protein.



[View online »](#)

Product images:



Western blot analysis of extracts from K562 cells, using CDC42EP3 antibody. The lane on the right is treated with the synthesized peptide.