

## Product datasheet for **TA315074**

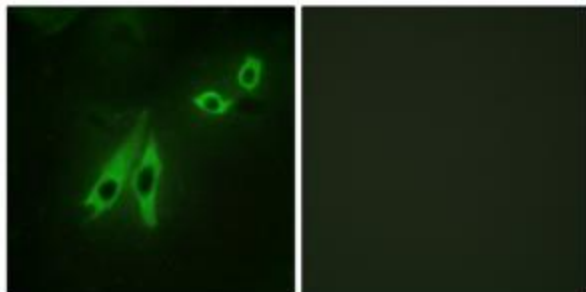
### AKAP3 Rabbit Polyclonal Antibody

#### Product data:

Product Type:	Primary Antibodies
Applications:	IF
Recommended Dilution:	IF: 1:100~1:500, ELISA: 1:10000
Reactivity:	Human, Mouse
Host:	Rabbit
Isotype:	IgG
Clonality:	Polyclonal
Immunogen:	The antiserum was produced against synthesized peptide derived from internal of human AKAP3.
Formulation:	Phosphate buffered saline (without Mg <sup>2+</sup> and Ca <sup>2+</sup> ), pH 7.4, 150mM NaCl, 0.02% sodium azide and 50% glycerol.
Concentration:	lot specific
Purification:	The antibody was affinity-purified from rabbit antiserum by affinity-chromatography using epitope-specific immunogen.
Conjugation:	Unconjugated
Storage:	Store at -20°C as received.
Stability:	Stable for 12 months from date of receipt.
Gene Name:	A-kinase anchoring protein 3
Database Link:	<a href="#">NP_006413</a> <a href="#">Entrez Gene 11642 Mouse</a> <a href="#">Entrez Gene 10566 Human</a> <a href="#">O75969</a>
Synonyms:	AKAP 110; AKAP110; CT82; FSP95; HEL159; PRKA3; SOB1
Note:	AKAP3 antibody detects endogenous levels of total AKAP3 protein.
Protein Families:	Druggable Genome



[View online »](#)

**Product images:**

Immunofluorescence analysis of NIH/3T3 cells, using AKAP3 antibody. The picture on the right is treated with the synthesized peptide.