

Product datasheet for **TA315073**

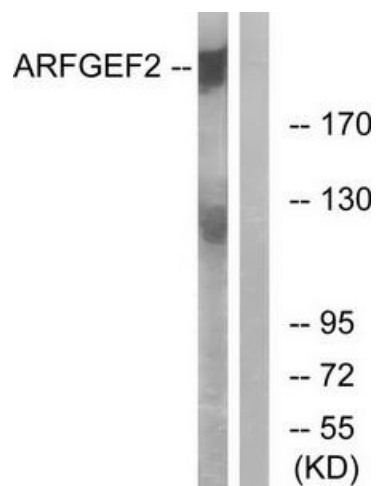
ARFGEF2 Rabbit Polyclonal Antibody

Product data:

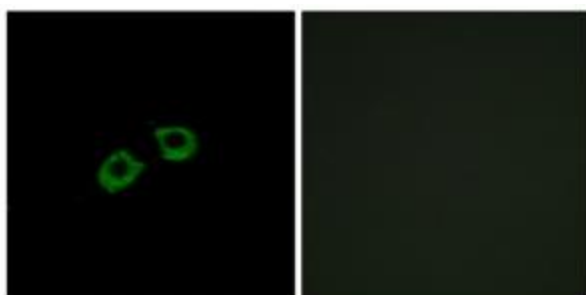
Product Type:	Primary Antibodies
Applications:	IF, WB
Recommended Dilution:	WB: 1:500~1:3000, IF: 1:100~1:500, ELISA: 1:20000
Reactivity:	Human, Mouse, Rat
Host:	Rabbit
Isotype:	IgG
Clonality:	Polyclonal
Immunogen:	The antiserum was produced against synthesized peptide derived from internal of human ARFGEF2.
Formulation:	Phosphate buffered saline (without Mg ²⁺ and Ca ²⁺), pH 7.4, 150mM NaCl, 0.02% sodium azide and 50% glycerol.
Concentration:	lot specific
Purification:	The antibody was affinity-purified from rabbit antiserum by affinity-chromatography using epitope-specific immunogen.
Conjugation:	Unconjugated
Storage:	Store at -20°C as received.
Stability:	Stable for 12 months from date of receipt.
Gene Name:	ADP ribosylation factor guanine nucleotide exchange factor 2
Database Link:	NP_006411 Entrez Gene 99371 Mouse Entrez Gene 296380 Rat Entrez Gene 10564 Human Q9Y6D5
Synonyms:	BIG2; dj1164110.1; PVNH2
Note:	ARFGEF2 antibody detects endogenous levels of total ARFGEF2 protein.



[View online »](#)

Product images:

Western blot analysis of extracts from A549 cells, using ARFGEF2 antibody. The lane on the right is treated with the synthesized peptide.



Immunofluorescence analysis of A549 cells, using ARFGEF2 antibody. The picture on the right is treated with the synthesized peptide.