

Product datasheet for **TA315070**

KAT5 Rabbit Polyclonal Antibody

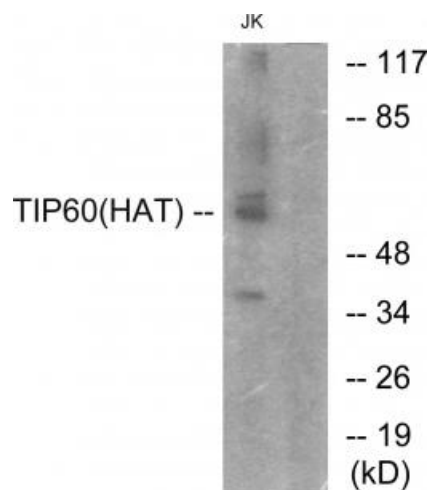
Product data:

Product Type:	Primary Antibodies
Applications:	WB
Recommended Dilution:	WB: 1:500~1:3000, ELISA: 1:40000
Reactivity:	Human, Mouse
Modifications:	Phospho-specific
Host:	Rabbit
Isotype:	IgG
Clonality:	Polyclonal
Immunogen:	The antiserum was produced against synthesized phosphopeptide derived from human TIP60 around the phosphorylation site of serine 86 (P-G-SP-R-P).
Formulation:	Phosphate buffered saline (without Mg ²⁺ and Ca ²⁺), pH 7.4, 150mM NaCl, 0.02% sodium azide and 50% glycerol.
Concentration:	lot specific
Purification:	The antibody was affinity-purified from rabbit antiserum by affinity-chromatography using epitope-specific immunogen.
Conjugation:	Unconjugated
Storage:	Store at -20°C as received.
Stability:	Stable for 12 months from date of receipt.
Gene Name:	lysine acetyltransferase 5
Database Link:	NP_874369 Entrez Gene 81601 Mouse Entrez Gene 10524 Human Q92993
Synonyms:	cPLA2; ESA1; HTATIP; HTATIP1; PLIP; TIP; TIP60; ZC2HC5
Note:	TIP60 (Phospho-Ser86) antibody detects endogenous levels of TIP60 only when phosphorylated at serine 86.
Protein Families:	Druggable Genome, Transcription Factors



[View online »](#)

Product images:



Western blot analysis of extracts from Jurkat cells, using TIP60 (Phospho-Ser86) antibody. The lane on the right is treated with the synthesized peptide.