

Product datasheet for **TA315066**

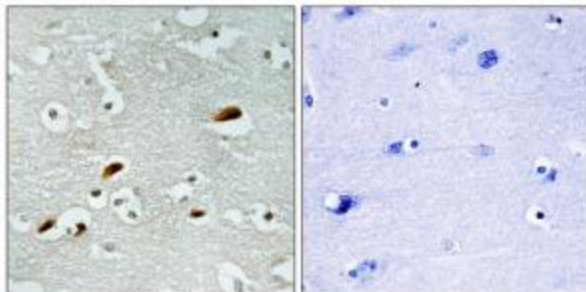
KAT5 Rabbit Polyclonal Antibody

Product data:

| | |
|------------------------------|---|
| Product Type: | Primary Antibodies |
| Applications: | IHC |
| Recommended Dilution: | IHC: 1:50~1:100, ELISA: 1:20000 |
| Reactivity: | Human, Mouse, Rat |
| Host: | Rabbit |
| Isotype: | IgG |
| Clonality: | Polyclonal |
| Immunogen: | The antiserum was produced against synthesized peptide derived from internal of human TIP60. |
| Formulation: | Phosphate buffered saline (without Mg ²⁺ and Ca ²⁺), pH 7.4, 150mM NaCl, 0.02% sodium azide and 50% glycerol. |
| Concentration: | lot specific |
| Purification: | The antibody was affinity-purified from rabbit antiserum by affinity-chromatography using epitope-specific immunogen. |
| Conjugation: | Unconjugated |
| Storage: | Store at -20°C as received. |
| Stability: | Stable for 12 months from date of receipt. |
| Gene Name: | lysine acetyltransferase 5 |
| Database Link: | NP_874369 Entrez Gene 81601 Mouse Entrez Gene 192218 Rat Entrez Gene 10524 Human Q92993 |
| Synonyms: | cPLA2; ESA1; HTATIP; HTATIP1; PLIP; TIP; TIP60; ZC2HC5 |
| Note: | TIP60 antibody detects endogenous levels of total TIP60 protein. |
| Protein Families: | Druggable Genome, Transcription Factors |



[View online »](#)

Product images:

Immunohistochemistry analysis of paraffin-embedded human brain tissue, using TIP60 antibody. The picture on the right is treated with the synthesized peptide.