

Product datasheet for **TA315060**

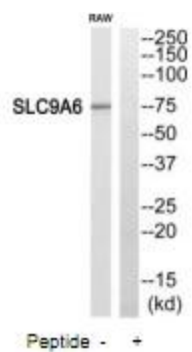
SLC9A6 Rabbit Polyclonal Antibody

Product data:

Product Type:	Primary Antibodies
Applications:	WB
Recommended Dilution:	WB: 1:500~1:3000, ELISA: 1:40000
Reactivity:	Human, Mouse
Host:	Rabbit
Isotype:	IgG
Clonality:	Polyclonal
Immunogen:	The antiserum was produced against synthesized peptide derived from internal of human SLC9A6.
Formulation:	Phosphate buffered saline (without Mg ²⁺ and Ca ²⁺), pH 7.4, 150mM NaCl, 0.02% sodium azide and 50% glycerol.
Concentration:	lot specific
Purification:	The antibody was affinity-purified from rabbit antiserum by affinity-chromatography using epitope-specific immunogen.
Conjugation:	Unconjugated
Storage:	Store at -20°C as received.
Stability:	Stable for 12 months from date of receipt.
Gene Name:	solute carrier family 9 member A6
Database Link:	NP_001036002 Entrez Gene 236794 Mouse Entrez Gene 10479 Human Q92581
Synonyms:	MRSA; NHE6
Note:	SLC9A6 antibody detects endogenous levels of total SLC9A6 protein.
Protein Families:	Druggable Genome, Transmembrane
Protein Pathways:	Cardiac muscle contraction



[View online »](#)

Product images:

Western blot analysis of extracts from RAW264.7 cells, using SLC9A6 antibody. The lane on the right is treated with the synthesized peptide.