

## Product datasheet for **TA315059**

### ATP5PD Rabbit Polyclonal Antibody

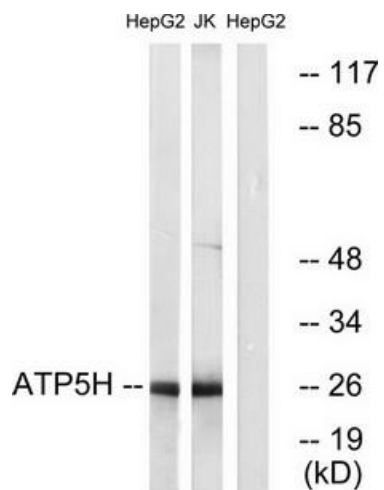
#### Product data:

Product Type:	Primary Antibodies
Applications:	WB
Recommended Dilution:	WB: 1:500~1:3000, ELISA: 1:20000
Reactivity:	Human, Mouse, Rat
Host:	Rabbit
Isotype:	IgG
Clonality:	Polyclonal
Immunogen:	The antiserum was produced against synthesized peptide derived from internal of humanATP5H.
Formulation:	Phosphate buffered saline (without Mg <sup>2+</sup> and Ca <sup>2+</sup> ), pH 7.4, 150mM NaCl, 0.02% sodium azide and 50% glycerol.
Concentration:	lot specific
Purification:	The antibody was affinity-purified from rabbit antiserum by affinity-chromatography using epitope-specific immunogen.
Conjugation:	Unconjugated
Storage:	Store at -20°C as received.
Stability:	Stable for 12 months from date of receipt.
Gene Name:	ATP synthase, H <sup>+</sup> transporting, mitochondrial Fo complex subunit D
Database Link:	<a href="#">NP_001003785</a> <a href="#">Entrez Gene 71679 MouseEntrez Gene 641434 RatEntrez Gene 10476 Human O75947</a>
Synonyms:	ATPQ
Note:	ATP5H antibody detects endogenous levels of total ATP5H protein.
Protein Pathways:	Alzheimer's disease, Huntington's disease, Metabolic pathways, Oxidative phosphorylation, Parkinson's disease



[View online »](#)

## Product images:



Western blot analysis of extracts from HepG2 cells and Jurkat cells, using ATP5H antibody. The lane on the right is treated with the synthesized peptide.