

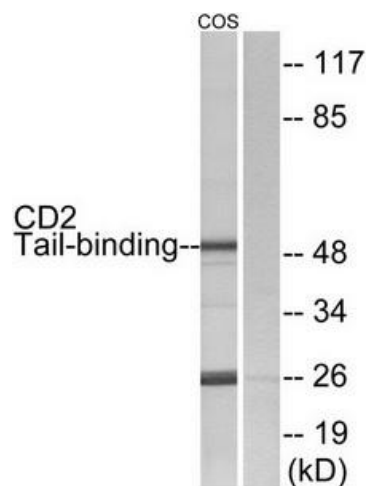
## Product datasheet for **TA315051**

### CD2BP2 Rabbit Polyclonal Antibody

#### Product data:

Product Type:	Primary Antibodies
Applications:	WB
Recommended Dilution:	WB: 1:500~1:3000, ELISA: 1:40000
Reactivity:	Human
Host:	Rabbit
Isotype:	IgG
Clonality:	Polyclonal
Immunogen:	The antiserum was produced against synthesized peptide derived from internal of human CD2 Tail-binding.
Formulation:	Phosphate buffered saline (without Mg <sup>2+</sup> and Ca <sup>2+</sup> ), pH 7.4, 150mM NaCl, 0.02% sodium azide and 50% glycerol.
Concentration:	lot specific
Purification:	The antibody was affinity-purified from rabbit antiserum by affinity-chromatography using epitope-specific immunogen.
Conjugation:	Unconjugated
Storage:	Store at -20°C as received.
Stability:	Stable for 12 months from date of receipt.
Gene Name:	CD2 (cytoplasmic tail) binding protein 2
Database Link:	<a href="#">NP_001230575</a> <a href="#">Entrez Gene 10421 Human</a> <a href="#">O95400</a>
Synonyms:	FWP010; LIN1; PPP1R59; Snu40; U5-52K
Note:	CD2 Tail-binding antibody detects endogenous levels of total CD2 Tail-binding protein.


[View online »](#)

**Product images:**

Western blot analysis of extracts from COS-7 cells, using CD2 Tail-binding antibody. The lane on the right is treated with the synthesized peptide.