

Product datasheet for **TA315048**

HEC1 (NDC80) Rabbit Polyclonal Antibody

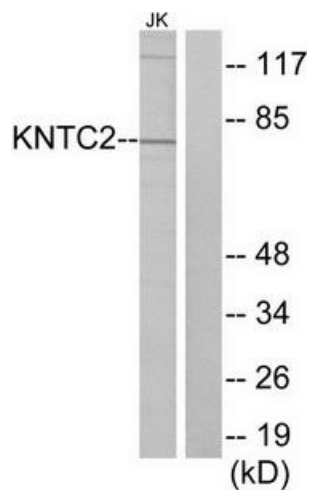
Product data:

Product Type:	Primary Antibodies
Applications:	IF, WB
Recommended Dilution:	WB: 1:500~1:3000, IF: 1:100~1:500, ELISA: 1:20000
Reactivity:	Human, Mouse
Host:	Rabbit
Isotype:	IgG
Clonality:	Polyclonal
Immunogen:	The antiserum was produced against synthesized peptide derived from internal of human KNTC2.
Formulation:	Phosphate buffered saline (without Mg ²⁺ and Ca ²⁺), pH 7.4, 150mM NaCl, 0.02% sodium azide and 50% glycerol.
Concentration:	lot specific
Purification:	The antibody was affinity-purified from rabbit antiserum by affinity-chromatography using epitope-specific immunogen.
Conjugation:	Unconjugated
Storage:	Store at -20°C as received.
Stability:	Stable for 12 months from date of receipt.
Gene Name:	NDC80, kinetochore complex component
Database Link:	NP_006092 Entrez Gene 67052 Mouse Entrez Gene 10403 Human Q14777
Synonyms:	HEC; HEC1; HsHec1; hsNDC80; KNTC2; TID3
Note:	KNTC2 antibody detects endogenous levels of total KNTC2 protein.
Protein Families:	Druggable Genome

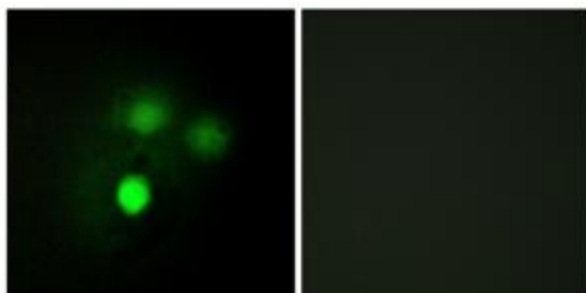


[View online »](#)

Product images:



Western blot analysis of extracts from Jurkat cells, using KNTC2 antibody. The lane on the right is treated with the synthesized peptide.



Immunofluorescence analysis of HUVEC cells, using KNTC2 antibody. The picture on the right is treated with the synthesized peptide.