

Product datasheet for **TA315047**

BRAF35 (HMG20B) Rabbit Polyclonal Antibody

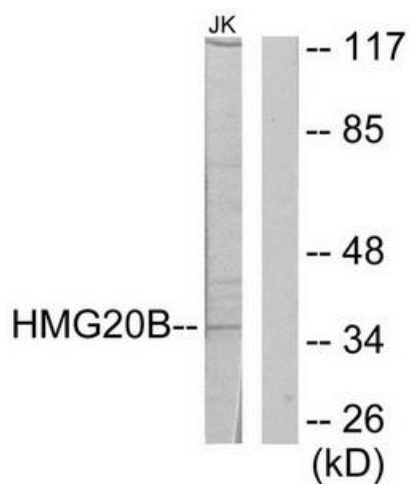
Product data:

Product Type:	Primary Antibodies
Applications:	WB
Recommended Dilution:	WB: 1:500~1:3000, ELISA: 1:20000
Reactivity:	Human
Host:	Rabbit
Isotype:	IgG
Clonality:	Polyclonal
Immunogen:	The antiserum was produced against synthesized peptide derived from N-terminal of human HMG20B.
Formulation:	Phosphate buffered saline (without Mg ²⁺ and Ca ²⁺), pH 7.4, 150mM NaCl, 0.02% sodium azide and 50% glycerol.
Concentration:	lot specific
Purification:	The antibody was affinity-purified from rabbit antiserum by affinity-chromatography using epitope-specific immunogen.
Conjugation:	Unconjugated
Storage:	Store at -20°C as received.
Stability:	Stable for 12 months from date of receipt.
Gene Name:	high mobility group 20B
Database Link:	NP_006330 Entrez Gene 10362 Human Q9P0W2
Synonyms:	BRAF25; BRAF35; HMGX2; HMGXB2; PP7706; pp8857; SMARCE1r; SOXL
Note:	HMG20B antibody detects endogenous levels of total HMG20B protein.
Protein Families:	Druggable Genome, Transcription Factors



[View online »](#)

Product images:



Western blot analysis of extracts from Jurkat cells, using HMG20B antibody. The lane on the right is treated with the synthesized peptide.