

## Product datasheet for **TA315044**

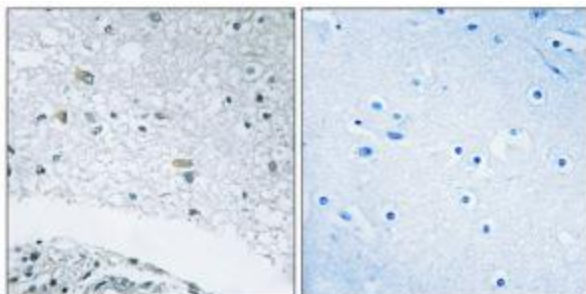
### Laminin (LAMC3) Rabbit Polyclonal Antibody

#### Product data:

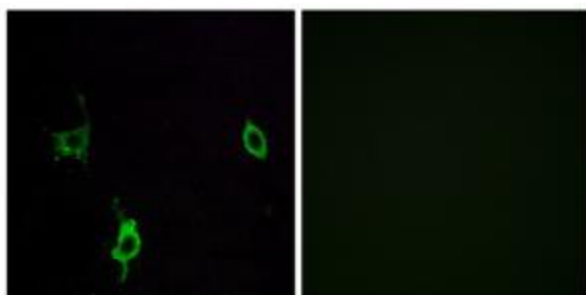
Product Type:	Primary Antibodies
Applications:	IF, IHC
Recommended Dilution:	IHC: 1:50~1:100, IF: 1:100~1:500, ELISA: 1:40000
Reactivity:	Human, Mouse
Host:	Rabbit
Isotype:	IgG
Clonality:	Polyclonal
Immunogen:	The antiserum was produced against synthesized peptide derived from internal of human LAMC3.
Formulation:	Phosphate buffered saline (without Mg <sup>2+</sup> and Ca <sup>2+</sup> ), pH 7.4, 150mM NaCl, 0.02% sodium azide and 50% glycerol.
Concentration:	lot specific
Purification:	The antibody was affinity-purified from rabbit antiserum by affinity-chromatography using epitope-specific immunogen.
Conjugation:	Unconjugated
Storage:	Store at -20°C as received.
Stability:	Stable for 12 months from date of receipt.
Gene Name:	laminin subunit gamma 3
Database Link:	<a href="#">NP_006050</a> <a href="#">Entrez Gene 23928 Mouse</a> <a href="#">Entrez Gene 10319 Human</a> <a href="#">Q9Y6N6</a>
Synonyms:	OCCM
Note:	LAMC3 antibody detects endogenous levels of total LAMC3 protein.
Protein Pathways:	ECM-receptor interaction, Focal adhesion, Pathways in cancer, Small cell lung cancer



[View online »](#)

**Product images:**

Immunohistochemistry analysis of paraffin-embedded human brain tissue using LAMC3 antibody. The picture on the right is treated with the synthesized peptide.



Immunofluorescence analysis of LOVO cells, using LAMC3 antibody. The picture on the right is treated with the synthesized peptide.