

Product datasheet for **TA315039**

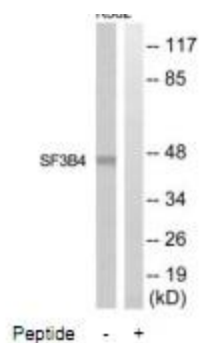
SF3B4 Rabbit Polyclonal Antibody

Product data:

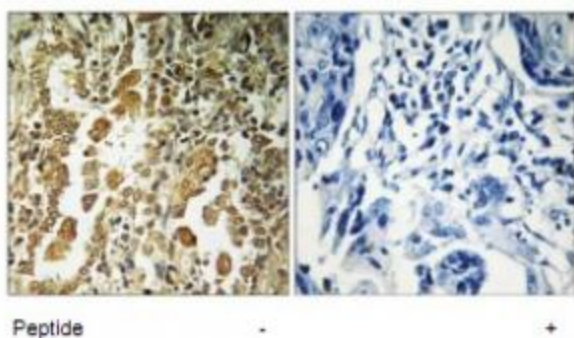
Product Type:	Primary Antibodies
Applications:	IHC, WB
Recommended Dilution:	WB: 1:500~1:3000, IHC: 1:50~1:100, ELISA: 1:40000
Reactivity:	Mouse, Human, Rat
Host:	Rabbit
Isotype:	IgG
Clonality:	Polyclonal
Immunogen:	The antiserum was produced against synthesized peptide derived from internal of human SF3B4.
Formulation:	Phosphate buffered saline (without Mg ²⁺ and Ca ²⁺), pH 7.4, 150mM NaCl, 0.02% sodium azide and 50% glycerol.
Concentration:	lot specific
Purification:	The antibody was affinity-purified from rabbit antiserum by affinity-chromatography using epitope-specific immunogen.
Conjugation:	Unconjugated
Storage:	Store at -20°C as received.
Stability:	Stable for 12 months from date of receipt.
Gene Name:	splicing factor 3b subunit 4
Database Link:	NP_005841 Entrez Gene 107701 MouseEntrez Gene 295270 RatEntrez Gene 10262 Human Q15427
Synonyms:	AFD1; Hsh49; SAP49; SF3b49
Note:	SF3B4 antibody detects endogenous levels of total SF3B4 protein.
Protein Pathways:	Spliceosome



[View online »](#)

Product images:

Western blot analysis of extracts from K562 and Jurkat cells, using SF3B4 antibody. The lane on the right is treated with the synthesized peptide.



Immunohistochemistry analysis of paraffin-embedded human lung carcinoma tissue using SF3B4 antibody. The picture on the right is treated with the synthesized peptide.