

Product datasheet for **TA315037**

SLC17A2 Rabbit Polyclonal Antibody

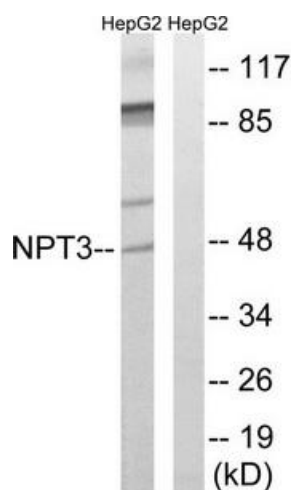
Product data:

| | |
|-----------------------|-----------------------------------------------------------------------------------------------------------------------------------------|
| Product Type: | Primary Antibodies |
| Applications: | WB |
| Recommended Dilution: | WB: 1:500~1:3000, ELISA: 1:40000 |
| Reactivity: | Human, Mouse |
| Host: | Rabbit |
| Isotype: | IgG |
| Clonality: | Polyclonal |
| Immunogen: | The antiserum was produced against synthesized peptide derived from internal of human SLC17A2. |
| Formulation: | Phosphate buffered saline (without Mg ²⁺ and Ca ²⁺), pH 7.4, 150mM NaCl, 0.02% sodium azide and 50% glycerol. |
| Concentration: | lot specific |
| Purification: | The antibody was affinity-purified from rabbit antiserum by affinity-chromatography using epitope-specific immunogen. |
| Conjugation: | Unconjugated |
| Storage: | Store at -20°C as received. |
| Stability: | Stable for 12 months from date of receipt. |
| Gene Name: | solute carrier family 17 member 2 |
| Database Link: | NP_005826 Entrez Gene 218103 Mouse Entrez Gene 10246 Human O00624 |
| Synonyms: | NPT3 |
| Note: | SLC17A2 antibody detects endogenous levels of total SLC17A2 protein. |
| Protein Families: | Transmembrane |



[View online »](#)

Product images:



Western blot analysis of extracts from HepG2 cells, using SLC17A2 antibody. The lane on the right is treated with the synthesized peptide.