

Product datasheet for **TA315036**

KCNMB2 Rabbit Polyclonal Antibody

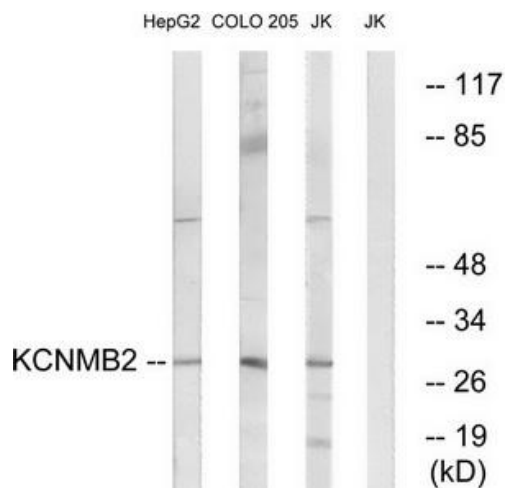
Product data:

Product Type:	Primary Antibodies
Applications:	WB
Recommended Dilution:	WB: 1:500~1:3000, ELISA: 1:20000
Reactivity:	Human, Mouse, Rat
Host:	Rabbit
Isotype:	IgG
Clonality:	Polyclonal
Immunogen:	The antiserum was produced against synthesized peptide derived from internal of human KCNMB2.
Formulation:	Phosphate buffered saline (without Mg ²⁺ and Ca ²⁺), pH 7.4, 150mM NaCl, 0.02% sodium azide and 50% glycerol.
Concentration:	lot specific
Purification:	The antibody was affinity-purified from rabbit antiserum by affinity-chromatography using epitope-specific immunogen.
Conjugation:	Unconjugated
Storage:	Store at -20°C as received.
Stability:	Stable for 12 months from date of receipt.
Gene Name:	potassium calcium-activated channel subfamily M regulatory beta subunit 2
Database Link:	NP_005823 Entrez Gene 72413 MouseEntrez Gene 294961 RatEntrez Gene 10242 Human Q9Y691
Synonyms:	MGC22431
Note:	KCNMB2 antibody detects endogenous levels of total KCNMB2 protein.
Protein Families:	Druggable Genome, Ion Channels: Other, Transmembrane
Protein Pathways:	Vascular smooth muscle contraction



[View online »](#)

Product images:



Western blot analysis of extracts from HepG2 cells, COLO cells and Jurkat cells, using KCNMB2 antibody. The lane on the right is treated with the synthesized peptide.