

Product datasheet for **TA315035**

MRPS31 Rabbit Polyclonal Antibody

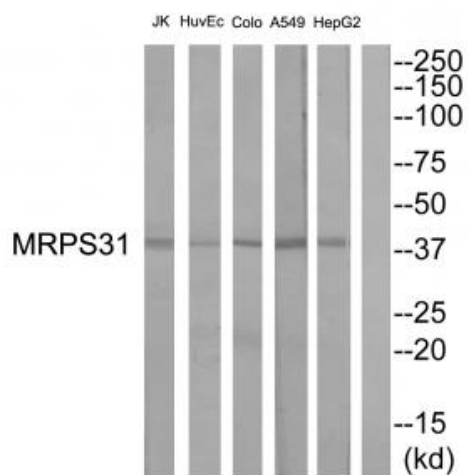
Product data:

Product Type:	Primary Antibodies
Applications:	WB
Recommended Dilution:	WB: 1:500~1:3000, ELISA: 1:10000
Reactivity:	Human
Host:	Rabbit
Isotype:	IgG
Clonality:	Polyclonal
Immunogen:	The antiserum was produced against synthesized peptide derived from Internal of human MRPS31.
Formulation:	Phosphate buffered saline (without Mg ²⁺ and Ca ²⁺), pH 7.4, 150mM NaCl, 0.02% sodium azide and 50% glycerol.
Concentration:	lot specific
Purification:	The antibody was affinity-purified from rabbit antiserum by affinity-chromatography using epitope-specific immunogen.
Conjugation:	Unconjugated
Storage:	Store at -20°C as received.
Stability:	Stable for 12 months from date of receipt.
Gene Name:	mitochondrial ribosomal protein S31
Database Link:	NP_005821 Entrez Gene 10240 Human Q92665
Synonyms:	IMOGN38; MRP-S31; S31mt
Note:	MRPS31 antibody detects endogenous levels of total MRPS31 protein



[View online »](#)

Product images:



Western blot analysis of extracts from HepG2 cells, A549 cells, COLO cells, HuvEc cells and JurKat cells, using MRPS31 antibody. The lane on the right is treated with the synthesized peptide.