

## Product datasheet for **TA315034**

### Angiopoietin like 7 (ANGPTL7) Rabbit Polyclonal Antibody

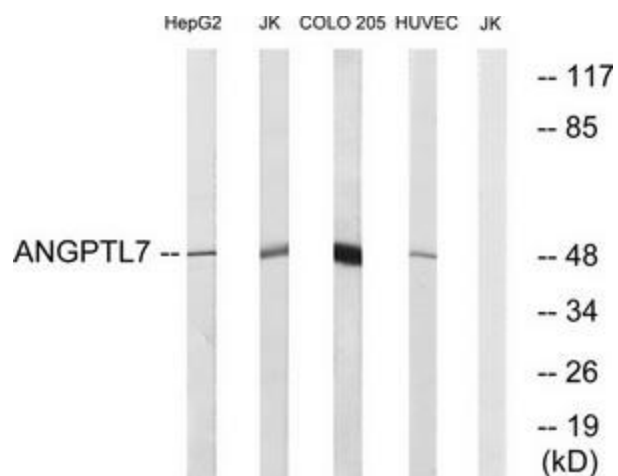
#### Product data:

Product Type:	Primary Antibodies
Applications:	WB
Recommended Dilution:	WB: 1:500~1:3000, ELISA: 1:10000
Reactivity:	Human, Mouse
Host:	Rabbit
Isotype:	IgG
Clonality:	Polyclonal
Immunogen:	The antiserum was produced against synthesized peptide derived from C-terminal of human ANGPTL7.
Formulation:	Phosphate buffered saline (without Mg <sup>2+</sup> and Ca <sup>2+</sup> ), pH 7.4, 150mM NaCl, 0.02% sodium azide and 50% glycerol.
Concentration:	lot specific
Purification:	The antibody was affinity-purified from rabbit antiserum by affinity-chromatography using epitope-specific immunogen.
Conjugation:	Unconjugated
Storage:	Store at -20°C as received.
Stability:	Stable for 12 months from date of receipt.
Gene Name:	angiopoietin like 7
Database Link:	<a href="#">NP_066969</a> <a href="#">Entrez Gene 654812 Mouse</a> <a href="#">Entrez Gene 10218 Human</a> <a href="#">O43827</a>
Synonyms:	AngX; CDT6; dj647M16.1
Note:	ANGPTL7 antibody detects endogenous levels of total ANGPTL7 protein.
Protein Families:	Druggable Genome, Secreted Protein, Transmembrane



[View online »](#)

## Product images:



Western blot analysis of extracts from HepG2 cells, Jurkat cells, COLO cells and HUVEC cells, using ANGPTL7 antibody. The lane on the right is treated with the synthesized peptide.