

Name: Rabbit polyclonal TNK2 / ACK1 (Tyr284) antibody(Phospho-specific)**Catalog:** TA315030**Product Data Sheet - PHOSPHO**

Components:	• Rabbit polyclonal TNK2 / ACK1 (Tyr284) antibody(Phospho-specific) (TA315030)
Amount:	100ul
Immunogen:	The antiserum was produced against synthesized phosphopeptide derived from human ACK1 around the phosphorylation site of tyrosine 284 (D-H-YP-V-M).
Host:	Rabbit
Isotype:	IgG
Species Reactivity:	Human, Mouse
Guaranteed Applications:	WB, IHC, IF
Suggested Dilutions:	WB: 1:500~1:3000, IHC: 1:50~1:100, IF: 1:100~1:500, ELISA: 1:10000
Concentration:	1mg/ml
Buffer:	Phosphate buffered saline (without Mg ²⁺ and Ca ²⁺), pH 7.4, 150mM NaCl, 0.02% sodium azide and 50% glycerol.
Purification:	The antibody was affinity-purified from rabbit antiserum by affinity-chromatography using epitope-specific immunogen.
Storage Condition:	Shipped at -20C or with ice packs. Upon delivery store at -20C. Dilute in PBS (pH7.3) if necessary. Stable for 12 months from date of receipt. Avoid repeated freeze-thaws.

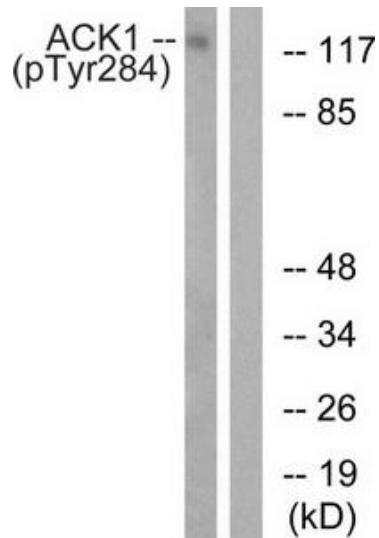
Target

Target Name:	tyrosine kinase non receptor 2
Alternative Name:	ACK ACK-1 ACK1 p21cdc42Hs
Database Link:	NP_005772 Entrez Gene 10188 Human Entrez Gene 51789 Mouse

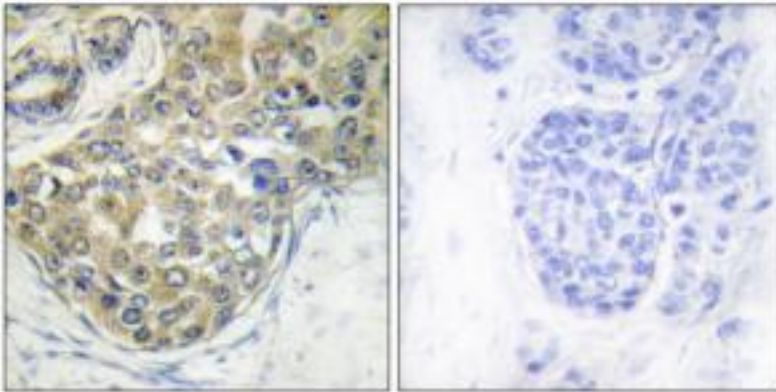
Function:

This product is to be used for laboratory only. Not for diagnostic or therapeutic use.

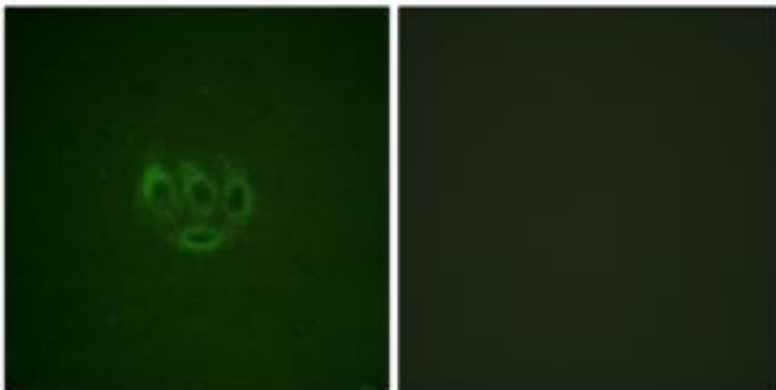
Validation Data



Western blot analysis of extracts from HepG2 cells, treated with EGF (200ng/ml, 30mins), using ACK1 (Phospho-Tyr284) antibody. The lane on the right is treated with the synthesized peptide.



Immunohistochemistry analysis of paraffin-embedded human breast carcinoma tissue using ACK1 (Phospho-Tyr284) antibody. The picture on the right is treated with the synthesized peptide.



Immunofluorescence analysis of A549 cells, using ACK1 (Phospho-Tyr284) antibody. The picture on the right is treated with the synthesized peptide.

* More validation images may be available on our website: <http://www.origene.com/antibody/TA315030.aspx>

This product is to be used for laboratory only. Not for diagnostic or therapeutic use.

© 2017 OriGene Technologies, Inc. 9620 Medical Center Dr., Suite 200, Rockville, MD 20850