

Product datasheet for **TA315028**

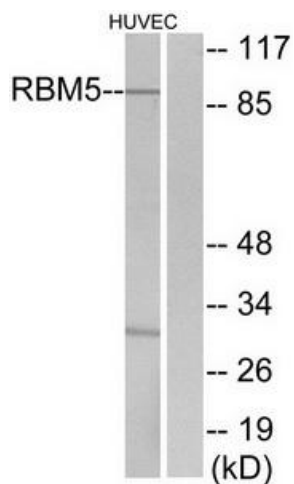
RBM5 Rabbit Polyclonal Antibody

Product data:

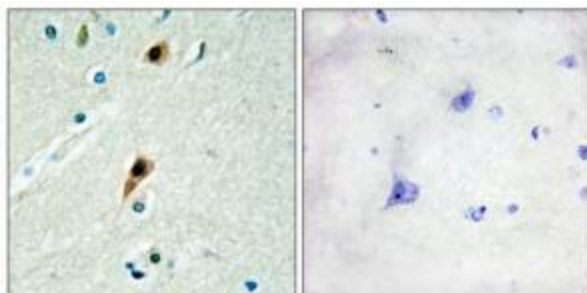
Product Type:	Primary Antibodies
Applications:	IHC, WB
Recommended Dilution:	WB: 1:500~1:3000, ELISA: 1:10000
Reactivity:	Human, Mouse
Host:	Rabbit
Isotype:	IgG
Clonality:	Polyclonal
Immunogen:	The antiserum was produced against synthesized peptide derived from internal of human RBM5.
Formulation:	Phosphate buffered saline (without Mg ²⁺ and Ca ²⁺), pH 7.4, 150mM NaCl, 0.02% sodium azide and 50% glycerol.
Concentration:	lot specific
Purification:	The antibody was affinity-purified from rabbit antiserum by affinity-chromatography using epitope-specific immunogen.
Conjugation:	Unconjugated
Storage:	Store at -20°C as received.
Stability:	Stable for 12 months from date of receipt.
Gene Name:	RNA binding motif protein 5
Database Link:	NP_005769 Entrez Gene 83486 Mouse Entrez Gene 10181 Human P52756
Synonyms:	G15; H37; LUCA15; RMB5
Note:	RBM5 antibody detects endogenous levels of total RBM5 protein.
Protein Families:	Druggable Genome



[View online »](#)

Product images:

Western blot analysis of extracts from HUVEC cells, using RBM5 antibody. The lane on the right is treated with the synthesized peptide.



Immunohistochemistry analysis of paraffin-embedded human brain tissue using RBM5 antibody. The picture on the right is treated with the synthesized peptide.