

Product datasheet for **TA315025**

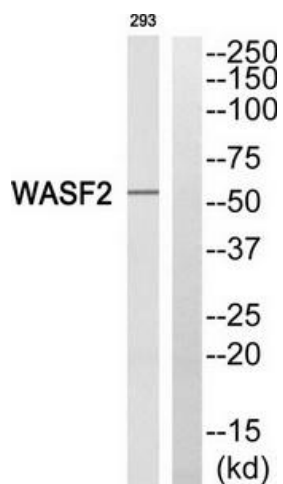
WASF2 Rabbit Polyclonal Antibody

Product data:

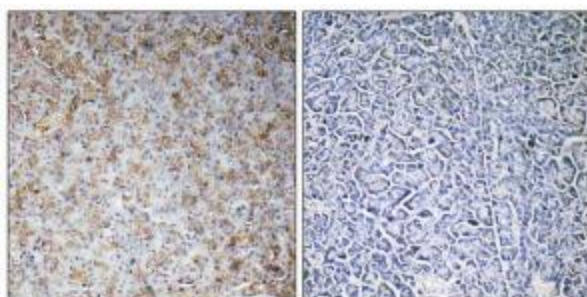
Product Type:	Primary Antibodies
Applications:	IHC, WB
Recommended Dilution:	WB: 1:500~1:3000, IHC: 1:50~1:100, ELISA: 1:1000
Reactivity:	Human, Mouse, Rat
Host:	Rabbit
Isotype:	IgG
Clonality:	Polyclonal
Immunogen:	The antiserum was produced against synthesized peptide derived from internal of human WASF2.
Formulation:	Phosphate buffered saline (without Mg ²⁺ and Ca ²⁺), pH 7.4, 150mM NaCl, 0.02% sodium azide and 50% glycerol.
Concentration:	lot specific
Purification:	The antibody was affinity-purified from rabbit antiserum by affinity-chromatography using epitope-specific immunogen.
Conjugation:	Unconjugated
Storage:	Store at -20°C as received.
Stability:	Stable for 12 months from date of receipt.
Gene Name:	WAS protein family member 2
Database Link:	NP_008921 Entrez Gene 242687 MouseEntrez Gene 313024 RatEntrez Gene 10163 Human Q9Y6W5
Synonyms:	dJ393P12.2; IMD2; SCAR2; WASF4; WAVE2
Note:	WASF2 antibody detects endogenous levels of total WASF2 protein.
Protein Families:	Druggable Genome
Protein Pathways:	Adherens junction, Fc gamma R-mediated phagocytosis, Regulation of actin cytoskeleton



[View online »](#)

Product images:

Western blot analysis of extracts from 293 cells, using WASF2 antibody. The lane on the right is treated with the synthesized peptide.



Immunohistochemistry analysis of paraffin-embedded human pancreas tissue, using WASF2 antibody. The picture on the right is treated with the synthesized peptide.