

Product datasheet for **TA315023**

AASS Rabbit Polyclonal Antibody

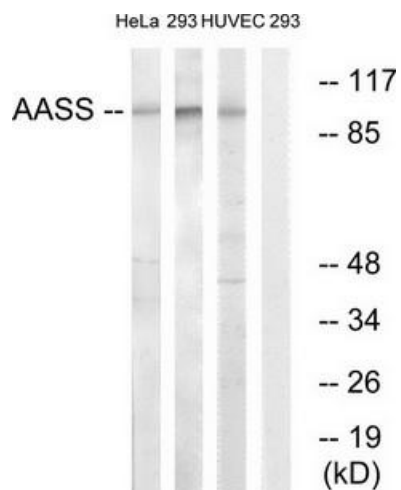
Product data:

Product Type:	Primary Antibodies
Applications:	WB
Recommended Dilution:	WB: 1:500~1:3000, ELISA: 1:1000
Reactivity:	Human
Host:	Rabbit
Isotype:	IgG
Clonality:	Polyclonal
Immunogen:	he antiserum was produced against synthesized peptide derived from internal of human AASS.
Formulation:	Phosphate buffered saline (without Mg ²⁺ and Ca ²⁺), pH 7.4, 150mM NaCl, 0.02% sodium azide and 50% glycerol.
Purification:	The antibody was affinity-purified from rabbit antiserum by affinity-chromatography using epitope-specific immunogen.
Conjugation:	Unconjugated
Storage:	Store at -20°C as received.
Stability:	Stable for 12 months from date of receipt.
Gene Name:	aminoadipate-semialdehyde synthase
Database Link:	NP_005754 Entrez Gene 10157 Human Q9UDR5
Synonyms:	LKR; LKRSDH; LORS DH; SDH
Note:	AASS antibody detects endogenous levels of total AASS protein.
Protein Families:	Druggable Genome
Protein Pathways:	Lysine biosynthesis, Lysine degradation, Metabolic pathways



[View online »](#)

Product images:



Western blot analysis of extracts from HeLa cells, 293 cells and HUVEC cells, using AASS antibody. The lane on the right is treated with the synthesized peptide.