

Product datasheet for **TA315019**

TOB (TOB1) Rabbit Polyclonal Antibody

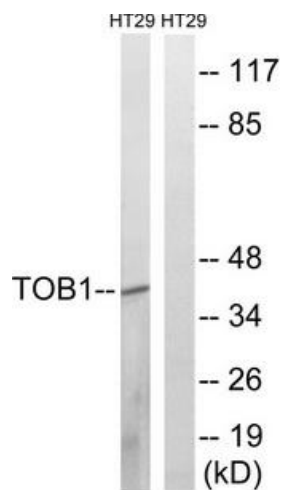
Product data:

Product Type:	Primary Antibodies
Applications:	WB
Recommended Dilution:	WB: 1:500~1:3000, ELISA: 1:10000
Reactivity:	Human, Mouse, Rat
Host:	Rabbit
Isotype:	IgG
Clonality:	Polyclonal
Immunogen:	The antiserum was produced against synthesized non-phosphopeptide derived from human TOB1 around the phosphorylation site of serine 164 (A-V-SP-P-T).
Formulation:	Phosphate buffered saline (without Mg ²⁺ and Ca ²⁺), pH 7.4, 150mM NaCl, 0.02% sodium azide and 50% glycerol.
Concentration:	lot specific
Purification:	The antibody was affinity-purified from rabbit antiserum by affinity-chromatography using epitope-specific immunogen.
Conjugation:	Unconjugated
Storage:	Store at -20°C as received.
Stability:	Stable for 12 months from date of receipt.
Gene Name:	transducer of ERBB2, 1
Database Link:	NP_001230806 Entrez Gene 22057 Mouse Entrez Gene 170842 Rat Entrez Gene 10140 Human P50616
Synonyms:	APRO5; APRO6; PIG49; TOB; TROB; TROB1
Note:	TOB1 (Ab-164) antibody detects endogenous levels of total TOB1 protein.
Protein Families:	Druggable Genome



[View online »](#)

Product images:



Western blot analysis of extracts from HT-29 cells, treated with serum (20%, 15mins), using TOB1 (Ab-164) antibody. The lane on the right is treated with the synthesized peptide.