

Product datasheet for **TA315017**

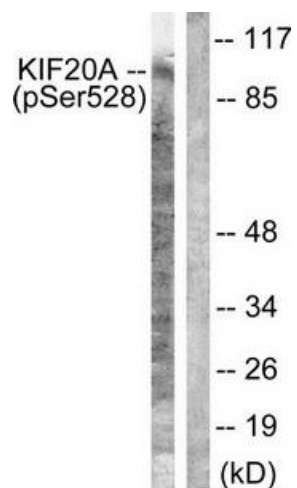
KIF20A Rabbit Polyclonal Antibody

Product data:

Product Type:	Primary Antibodies
Applications:	WB
Recommended Dilution:	WB: 1:500~1:3000, ELISA: 1:5000
Reactivity:	Human, Mouse
Modifications:	Phospho-specific
Host:	Rabbit
Isotype:	IgG
Clonality:	Polyclonal
Immunogen:	The antiserum was produced against synthesized phosphopeptide derived from human KIF20A around the phosphorylation site of serine 528 (E-H-SP-L-Q).
Formulation:	Phosphate buffered saline (without Mg ²⁺ and Ca ²⁺), pH 7.4, 150mM NaCl, 0.02% sodium azide and 50% glycerol.
Concentration:	lot specific
Purification:	The antibody was affinity-purified from rabbit antiserum by affinity-chromatography using epitope-specific immunogen.
Conjugation:	Unconjugated
Storage:	Store at -20°C as received.
Stability:	Stable for 12 months from date of receipt.
Gene Name:	kinesin family member 20A
Database Link:	NP_005724 Entrez Gene 19348 Mouse Entrez Gene 10112 Human O95235
Synonyms:	MKLP2; RAB6KIFL
Note:	KIF20A (Phospho-Ser528) antibody detects endogenous levels of KIF20A only when phosphorylated at serine 528
Protein Families:	Druggable Genome



[View online »](#)

Product images:

Western blot analysis of extracts from 293 cells, using KIF20A (Phospho-Ser528) antibody. The lane on the right is treated with the synthesized peptide.