

Product datasheet for **TA315015**

Arp3 (ACTR3) Rabbit Polyclonal Antibody

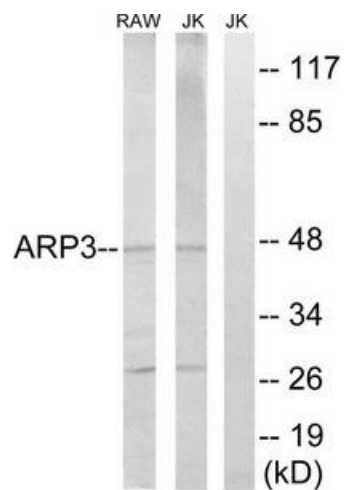
Product data:

Product Type:	Primary Antibodies
Applications:	WB
Recommended Dilution:	WB: 1:500~1:3000, ELISA: 1:40000
Reactivity:	Mouse, Rat, Human
Host:	Rabbit
Isotype:	IgG
Clonality:	Polyclonal
Immunogen:	The antiserum was produced against synthesized peptide derived from C-terminal of human ACTR3.
Formulation:	Phosphate buffered saline (without Mg ²⁺ and Ca ²⁺), pH 7.4, 150mM NaCl, 0.02% sodium azide and 50% glycerol.
Concentration:	lot specific
Purification:	The antibody was affinity-purified from rabbit antiserum by affinity-chromatography using epitope-specific immunogen.
Conjugation:	Unconjugated
Storage:	Store at -20°C as received.
Stability:	Stable for 12 months from date of receipt.
Gene Name:	ARP3 actin-related protein 3 homolog (yeast)
Database Link:	NP_005712 Entrez Gene 74117 Mouse Entrez Gene 81732 Rat Entrez Gene 10096 Human P61158
Synonyms:	ARP3
Note:	ACTR3 antibody detects endogenous levels of total ACTR3 protein.
Protein Families:	Druggable Genome



[View online »](#)

Product images:



Western blot analysis of extracts from RAW264.7 cells and Jurkat cells, using ACTR3 antibody. The lane on the right is treated with the synthesized peptide.