

Product datasheet for **TA315013**

COX17 Rabbit Polyclonal Antibody

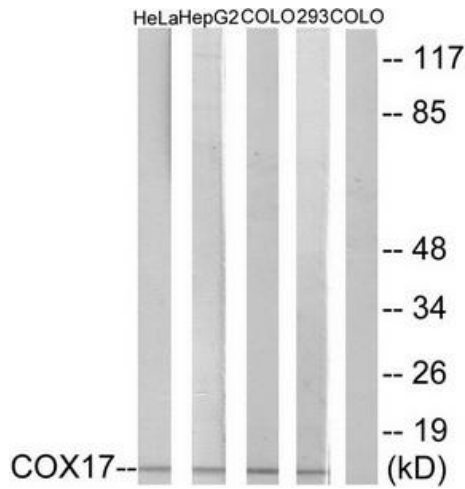
Product data:

Product Type:	Primary Antibodies
Applications:	IHC, WB
Recommended Dilution:	WB: 1:500~1:3000, IHC: 1:50~1:100, ELISA: 1:5000
Reactivity:	Human, Mouse, Rat
Host:	Rabbit
Isotype:	IgG
Clonality:	Polyclonal
Immunogen:	The antiserum was produced against synthesized peptide derived from N-terminal of human COX17.
Formulation:	Phosphate buffered saline (without Mg ²⁺ and Ca ²⁺), pH 7.4, 150mM NaCl, 0.02% sodium azide and 50% glycerol.
Concentration:	lot specific
Purification:	The antibody was affinity-purified from rabbit antiserum by affinity-chromatography using epitope-specific immunogen.
Conjugation:	Unconjugated
Storage:	Store at -20°C as received.
Stability:	Stable for 12 months from date of receipt.
Gene Name:	COX17 cytochrome c oxidase copper chaperone
Database Link:	NP_005685 Entrez Gene 12856 Mouse Entrez Gene 89786 Rat Entrez Gene 10063 Human Q14061
Synonyms:	MGC104397; MGC117386
Note:	COX17 antibody detects endogenous levels of total COX17 protein.
Protein Pathways:	Metabolic pathways, Oxidative phosphorylation

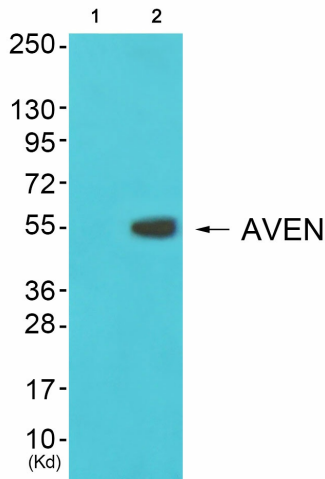


[View online »](#)

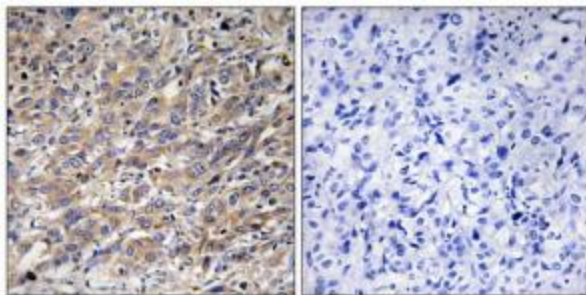
Product images:



Western blot analysis of extracts from HeLa cells, HepG2 cells, COLO cells and 293 cells, using COX17 antibody. The lane on the right is treated with the synthesized peptide.



Western blot analysis of extracts from 3T3 cells (Lane 2), using COX17 Antibody. The lane on the left is treated with synthesized peptide.



Immunohistochemistry analysis of paraffin-embedded human liver carcinoma tissue using COX17 antibody. The picture on the right is treated with the synthesized peptide.