

## Product datasheet for **TA315007**

### CAF1 (CHAF1A) Rabbit Polyclonal Antibody

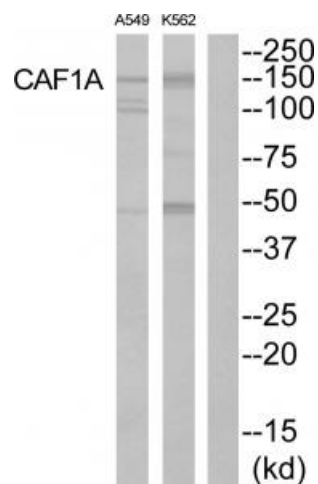
#### Product data:

Product Type:	Primary Antibodies
Applications:	WB
Recommended Dilution:	WB: 1:500~1:3000, ELISA: 1:10000
Reactivity:	Human, Mouse
Host:	Rabbit
Isotype:	IgG
Clonality:	Polyclonal
Immunogen:	The antiserum was produced against synthesized peptide derived from internal of human CAF1A.
Formulation:	Phosphate buffered saline (without Mg <sup>2+</sup> and Ca <sup>2+</sup> ), pH 7.4, 150mM NaCl, 0.02% sodium azide and 50% glycerol.
Concentration:	lot specific
Purification:	The antibody was affinity-purified from rabbit antiserum by affinity-chromatography using epitope-specific immunogen.
Conjugation:	Unconjugated
Storage:	Store at -20°C as received.
Stability:	Stable for 12 months from date of receipt.
Gene Name:	chromatin assembly factor 1 subunit A
Database Link:	<a href="#">NP_005474</a> <a href="#">Entrez Gene 27221 Mouse</a> <a href="#">Entrez Gene 10036 Human</a> <a href="#">Q13111</a>
Synonyms:	CAF-1; CAF1; CAF1B; CAF1P150; P150
Note:	CAF1A antibody detects endogenous levels of total CAF1A protein.
Protein Families:	Stem cell - Pluripotency, Transcription Factors



[View online »](#)

## Product images:



Western blot analysis of extracts from K562 cells and A549 cells, using CAF1A antibody. The lane on the right is treated with the synthesized peptide.