

## Product datasheet for **TA315006**

### GLCNE (GNE) Rabbit Polyclonal Antibody

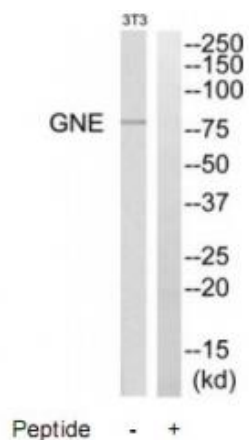
#### Product data:

Product Type:	Primary Antibodies
Applications:	IHC, WB
Recommended Dilution:	WB: 1:500~1:3000, IHC: 1:50~1:100, ELISA: 1:5000
Reactivity:	Human, Mouse, Rat
Host:	Rabbit
Isotype:	IgG
Clonality:	Polyclonal
Immunogen:	The antiserum was produced against synthesized peptide derived from C-terminal of human GNE.
Formulation:	Phosphate buffered saline (without Mg <sup>2+</sup> and Ca <sup>2+</sup> ), pH 7.4, 150mM NaCl, 0.02% sodium azide and 50% glycerol.
Concentration:	lot specific
Purification:	The antibody was affinity-purified from rabbit antiserum by affinity-chromatography using epitope-specific immunogen.
Conjugation:	Unconjugated
Storage:	Store at -20°C as received.
Stability:	Stable for 12 months from date of receipt.
Gene Name:	glucosamine (UDP-N-acetyl)-2-epimerase/N-acetylmannosamine kinase
Database Link:	<a href="#">NP_001121699</a> <a href="#">Entrez Gene 50798 MouseEntrez Gene 114711 RatEntrez Gene 10020 Human Q9Y223</a>
Synonyms:	DMRV; GLCNE; IBM2; NM; Uae1
Note:	GNE antibody detects endogenous levels of total GNE protein.
Protein Families:	Druggable Genome
Protein Pathways:	Amino sugar and nucleotide sugar metabolism, Metabolic pathways

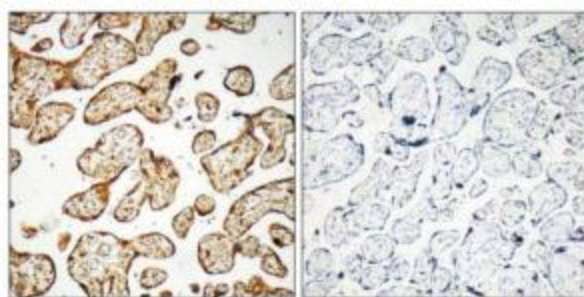


[View online »](#)

Product images:



Western blot analysis of extracts from NIH/3T3 cells, using GNE antibody. The lane on the right is treated with the synthesized peptide.



Immunohistochemistry analysis of paraffin-embedded human placenta tissue, using GNE antibody. The picture on the right is treated with the synthesized peptide.

Peptide - +