

## Product datasheet for **TA315005**

### HDAC5 Rabbit Polyclonal Antibody

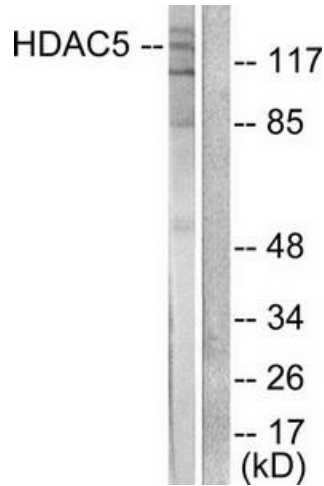
#### Product data:

Product Type:	Primary Antibodies
Applications:	IF, IHC, WB
Recommended Dilution:	WB: 1:500~1:3000, IHC: 1:50~1:100, IF: 1:100~1:500, ELISA: 1:5000
Reactivity:	Human, Mouse, Rat
Host:	Rabbit
Isotype:	IgG
Clonality:	Polyclonal
Immunogen:	The antiserum was produced against synthesized peptide derived from human HDAC5.
Formulation:	Phosphate buffered saline (without Mg <sup>2+</sup> and Ca <sup>2+</sup> ), pH 7.4, 150mM NaCl, 0.02% sodium azide and 50% glycerol.
Concentration:	lot specific
Purification:	The antibody was affinity-purified from rabbit antiserum by affinity-chromatography using epitope-specific immunogen.
Conjugation:	Unconjugated
Storage:	Store at -20°C as received.
Stability:	Stable for 12 months from date of receipt.
Gene Name:	histone deacetylase 5
Database Link:	<a href="#">NP_001015053</a> <a href="#">Entrez Gene 15184 Mouse</a> <a href="#">Entrez Gene 84580 Rat</a> <a href="#">Entrez Gene 10014 Human</a> <a href="#">Q9UQL6</a>
Synonyms:	HD5; NY-CO-9
Note:	HDAC5 antibody detects endogenous levels of total HDAC5 protein.
Protein Families:	Druggable Genome, Transcription Factors

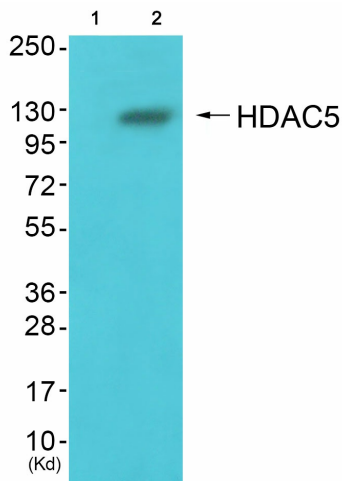


[View online »](#)

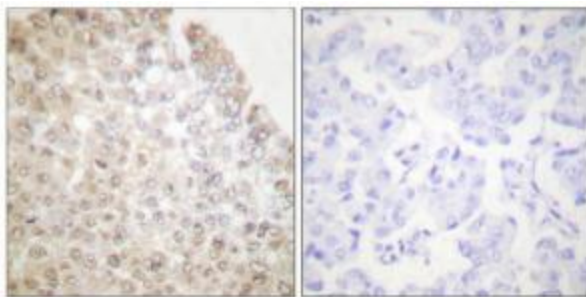
Product images:



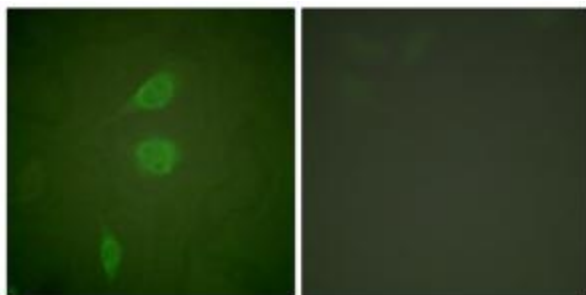
Western blot analysis of extracts from HepG2 cells, treated with PMA (125ng/ml, 30mins), using HDAC5 antibody (#TA315005).The lane on the right is treated with the synthesized peptide.



Western blot analysis of extracts from k562 cells (Lane 2), using HDAC5 Antibody. The lane on the left is treated with synthesized peptide.



Immunohistochemical analysis of paraffin-embedded human breast carcinoma tissue using HDAC5 antibody (#TA315005).The picture on the right is treated with the synthesized peptide.



Immunofluorescence analysis of NIH/3T3 cells, using HDAC5 antibody (#TA315005). The picture on the right is treated with the synthesized peptide.