

Product datasheet for **TA315000**

REC8 Rabbit Polyclonal Antibody

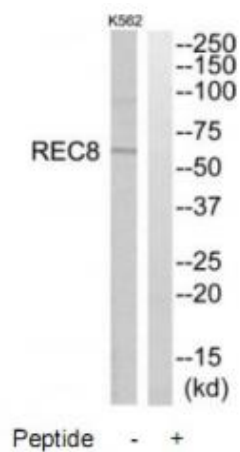
Product data:

Product Type:	Primary Antibodies
Applications:	WB
Recommended Dilution:	WB: 1:500~1:3000, ELISA: 1:5000
Reactivity:	Human
Host:	Rabbit
Isotype:	IgG
Clonality:	Polyclonal
Immunogen:	The antiserum was produced against synthesized peptide derived from internal of human REC8.
Formulation:	Phosphate buffered saline (without Mg ²⁺ and Ca ²⁺), pH 7.4, 150mM NaCl, 0.02% sodium azide and 50% glycerol.
Concentration:	lot specific
Purification:	The antibody was affinity-purified from rabbit antiserum by affinity-chromatography using epitope-specific immunogen.
Conjugation:	Unconjugated
Storage:	Store at -20°C as received.
Stability:	Stable for 12 months from date of receipt.
Gene Name:	REC8 meiotic recombination protein
Database Link:	NP_001041670 Entrez Gene 9985 Human O95072
Synonyms:	HR21spB; REC8L1; Rec8p
Note:	REC8 antibody detects endogenous levels of total REC8 protein.
Protein Pathways:	Oocyte meiosis



[View online »](#)

Product images:



Western blot analysis of extracts from K562 cells, using REC8 antibody. The lane on the right is treated with the synthesized peptide.