

Product datasheet for **TA314997**

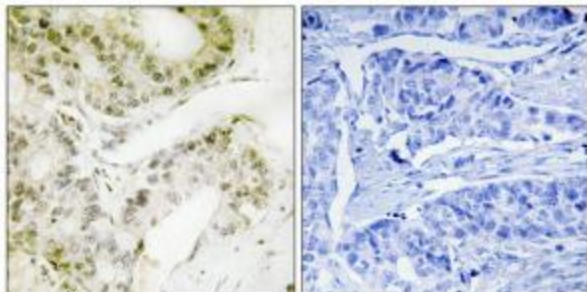
MED13 Rabbit Polyclonal Antibody

Product data:

| | |
|-----------------------|--|
| Product Type: | Primary Antibodies |
| Applications: | IHC |
| Recommended Dilution: | IHC: 1:50~1:100, ELISA: 1:40000 |
| Reactivity: | Human |
| Host: | Rabbit |
| Isotype: | IgG |
| Clonality: | Polyclonal |
| Immunogen: | The antiserum was produced against synthesized peptide derived from internal of human MED13. |
| Formulation: | Phosphate buffered saline (without Mg ²⁺ and Ca ²⁺), pH 7.4, 150mM NaCl, 0.02% sodium azide and 50% glycerol. |
| Concentration: | lot specific |
| Purification: | The antibody was affinity-purified from rabbit antiserum by affinity-chromatography using epitope-specific immunogen. |
| Conjugation: | Unconjugated |
| Storage: | Store at -20°C as received. |
| Stability: | Stable for 12 months from date of receipt. |
| Gene Name: | mediator complex subunit 13 |
| Database Link: | NP_005112 Entrez Gene 9969 Human Q9UHV7 |
| Synonyms: | ARC250; DRIP250; HSPC221; THRAP1; TRAP240 |
| Note: | MED13 antibody detects endogenous levels of total MED13 protein. |
| Protein Families: | Druggable Genome, Transcription Factors |



[View online »](#)

Product images:

Immunohistochemistry analysis of paraffin-embedded human lung carcinoma tissue, using MED13 antibody. The picture on the right is treated with the synthesized peptide.