

Product datasheet for **TA314995**

TL1A (TNFSF15) Rabbit Polyclonal Antibody

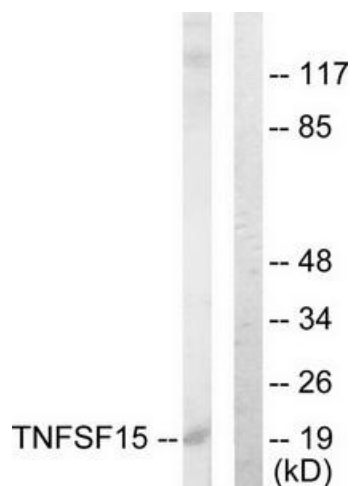
Product data:

Product Type:	Primary Antibodies
Applications:	IF, WB
Recommended Dilution:	WB: 1:500~1:3000, IF: 1:100~1:500, ELISA: 1:20000
Reactivity:	Human
Host:	Rabbit
Isotype:	IgG
Clonality:	Polyclonal
Immunogen:	The antiserum was produced against synthesized peptide derived from C-terminal of human TNFSF15.
Formulation:	Phosphate buffered saline (without Mg ²⁺ and Ca ²⁺), pH 7.4, 150mM NaCl, 0.02% sodium azide and 50% glycerol.
Concentration:	lot specific
Purification:	The antibody was affinity-purified from rabbit antiserum by affinity-chromatography using epitope-specific immunogen.
Conjugation:	Unconjugated
Storage:	Store at -20°C as received.
Stability:	Stable for 12 months from date of receipt.
Gene Name:	tumor necrosis factor superfamily member 15
Database Link:	NP_005109 Entrez Gene 9966 Human O95150
Synonyms:	TL1; TL1A; TNLG1B; VEGI; VEGI192A
Note:	TNFSF15 antibody detects endogenous levels of total TNFSF15 protein.
Protein Families:	Druggable Genome, Transmembrane
Protein Pathways:	Cytokine-cytokine receptor interaction

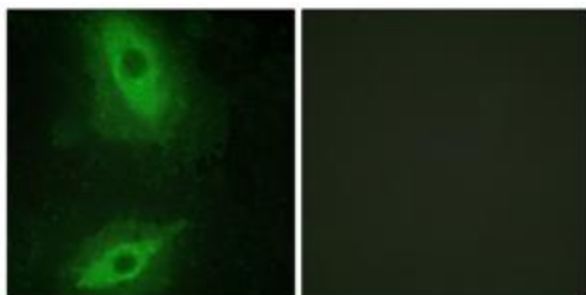


[View online »](#)

Product images:



Western blot analysis of extracts from COLO205 cells, using TNFSF15 antibody. The lane on the right is treated with the synthesized peptide.



Immunofluorescence analysis of HeLa cells, using TNFSF15 antibody. The picture on the right is treated with the synthesized peptide.