

Product datasheet for **TA314994**

ENDOGL1 (EXOG) Rabbit Polyclonal Antibody

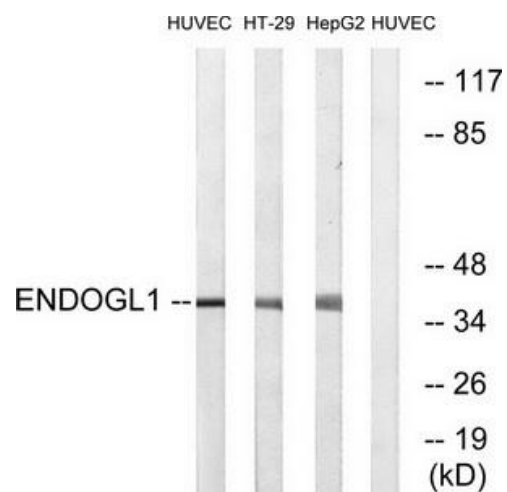
Product data:

Product Type:	Primary Antibodies
Applications:	WB
Recommended Dilution:	WB: 1:500~1:3000, ELISA: 1:10000
Reactivity:	Human
Host:	Rabbit
Isotype:	IgG
Clonality:	Polyclonal
Immunogen:	The antiserum was produced against synthesized peptide derived from internal of human ENDOGL1.
Formulation:	Phosphate buffered saline (without Mg ²⁺ and Ca ²⁺), pH 7.4, 150mM NaCl, 0.02% sodium azide and 50% glycerol.
Concentration:	lot specific
Purification:	The antibody was affinity-purified from rabbit antiserum by affinity-chromatography using epitope-specific immunogen.
Conjugation:	Unconjugated
Storage:	Store at -20°C as received.
Stability:	Stable for 12 months from date of receipt.
Gene Name:	endo/exonuclease (5'-3'), endonuclease G-like
Database Link:	NP_001138936 Entrez Gene 9941 Human Q9Y2C4
Synonyms:	ENDOGL1; ENDOGL2; ENGL; ENGL-a; ENGL-b; ENGLA; ENGLB
Note:	ENDOGL1 antibody detects endogenous levels of total ENDOGL1 protein.
Protein Families:	Druggable Genome, Transmembrane
Protein Pathways:	Apoptosis



[View online »](#)

Product images:



Western blot analysis of extracts from HUVEC cells, HT-29 cells and HepG2 cells, using ENDOGL1 antibody. The lane on the right is treated with the synthesized peptide.