

Product datasheet for **TA314986S**

G3BP2 Rabbit Polyclonal Antibody

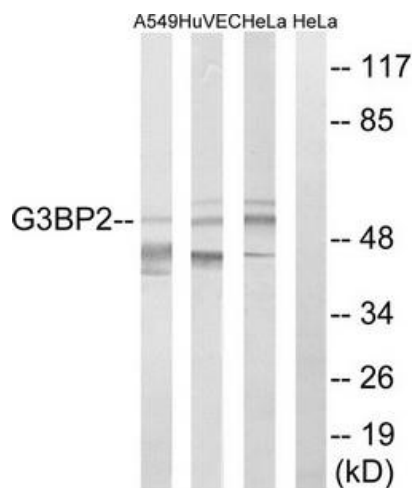
Product data:

Product Type:	Primary Antibodies
Applications:	WB
Recommended Dilution:	WB: 1:500~1:3000, ELISA: 1:10000
Reactivity:	Human, Mouse, Rat
Host:	Rabbit
Isotype:	IgG
Clonality:	Polyclonal
Immunogen:	The antiserum was produced against synthesized peptide derived from C-terminal of human G3BP2.
Formulation:	Phosphate buffered saline (without Mg ²⁺ and Ca ²⁺), pH 7.4, 150mM NaCl, 0.02% sodium azide and 50% glycerol.
Concentration:	lot specific
Purification:	The antibody was affinity-purified from rabbit antiserum by affinity-chromatography using epitope-specific immunogen.
Conjugation:	Unconjugated
Storage:	Store at -20°C as received.
Stability:	Stable for 12 months from date of receipt.
Gene Name:	G3BP stress granule assembly factor 2
Database Link:	NP_036429 Entrez Gene 23881 MouseEntrez Gene 305240 RatEntrez Gene 9908 Human Q9UN86
Synonyms:	GTPase activating protein (SH3 domain) binding protein 2; Ras-GTPase activating protein SH3 domain-binding protein 2
Note:	G3BP2 antibody detects endogenous levels of total G3BP2 protein.
Protein Families:	Druggable Genome



[View online »](#)

Product images:



Western blot analysis of extracts from A549 cells, HUVEC cells and HeLa cells, using G3BP2 antibody. The lane on the right is treated with the synthesized peptide.