

Product datasheet for **TA314985**

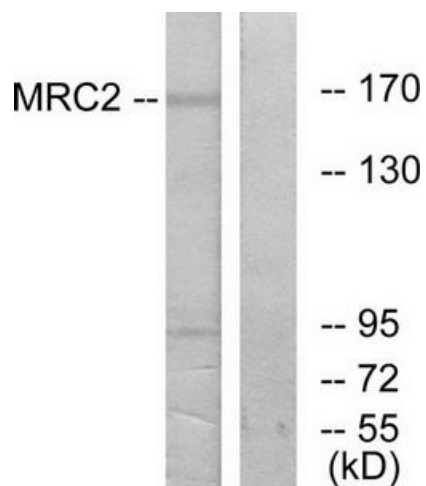
MRC2 Rabbit Polyclonal Antibody

Product data:

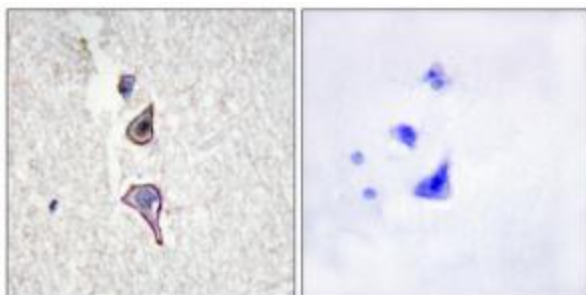
Product Type:	Primary Antibodies
Applications:	IF, IHC, WB
Recommended Dilution:	WB: 1:500~1:3000, IHC: 1:50~1:100, IF: 1:100~1:500, ELISA: 1:20000
Reactivity:	Human, Mouse, Rat
Host:	Rabbit
Isotype:	IgG
Clonality:	Polyclonal
Immunogen:	The antiserum was produced against synthesized peptide derived from internal of human MRC2.
Formulation:	Phosphate buffered saline (without Mg ²⁺ and Ca ²⁺), pH 7.4, 150mM NaCl, 0.02% sodium azide and 50% glycerol.
Concentration:	lot specific
Purification:	The antibody was affinity-purified from rabbit antiserum by affinity-chromatography using epitope-specific immunogen.
Conjugation:	Unconjugated
Storage:	Store at -20°C as received.
Stability:	Stable for 12 months from date of receipt.
Gene Name:	mannose receptor C type 2
Database Link:	NP_006030 Entrez Gene 17534 MouseEntrez Gene 498011 RatEntrez Gene 9902 Human Q9UBG0
Synonyms:	CD280; CLEC13E; ENDO180; UPARAP
Note:	MRC2 antibody detects endogenous levels of total MRC2 protein.
Protein Families:	Druggable Genome, Transmembrane



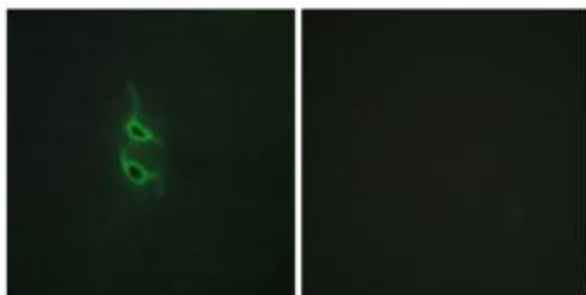
[View online »](#)

Product images:

Western blot analysis of extracts from 293 cells, using MRC2 antibody. The lane on the right is treated with the synthesized peptide.



Immunohistochemistry analysis of paraffin-embedded human brain tissue using MRC2 antibody. The picture on the right is treated with the synthesized peptide.



Immunofluorescence analysis of HepG2 cells, using MRC2 antibody. The picture on the right is treated with the synthesized peptide.