

## Product datasheet for **TA314983**

### SMG7 Rabbit Polyclonal Antibody

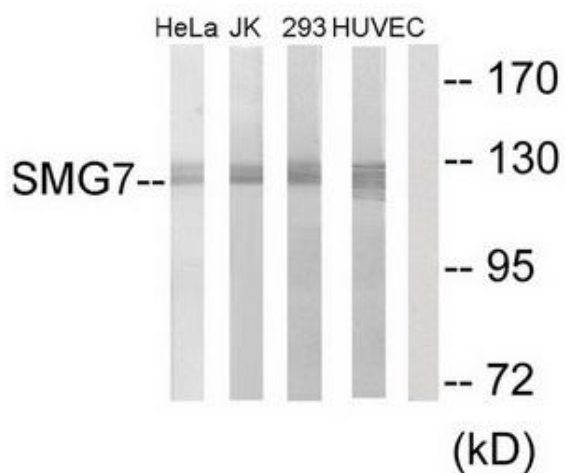
#### Product data:

Product Type:	Primary Antibodies
Applications:	IF, WB
Recommended Dilution:	WB: 1:500~1:3000, IF: 1:100~1:500, ELISA: 1:1000
Reactivity:	Human
Host:	Rabbit
Isotype:	IgG
Clonality:	Polyclonal
Immunogen:	The antiserum was produced against synthesized peptide derived from internal of human SMG7.
Formulation:	Phosphate buffered saline (without Mg <sup>2+</sup> and Ca <sup>2+</sup> ), pH 7.4, 150mM NaCl, 0.02% sodium azide and 50% glycerol.
Concentration:	lot specific
Purification:	The antibody was affinity-purified from rabbit antiserum by affinity-chromatography using epitope-specific immunogen.
Conjugation:	Unconjugated
Storage:	Store at -20°C as received.
Stability:	Stable for 12 months from date of receipt.
Gene Name:	SMG7, nonsense mediated mRNA decay factor
Database Link:	<a href="#">NP_001167532</a> <a href="#">Entrez Gene 9887 Human</a> <a href="#">Q92540</a>
Synonyms:	C1orf16; EST1C; SGA56M
Note:	SMG7 antibody detects endogenous levels of total SMG7 protein.

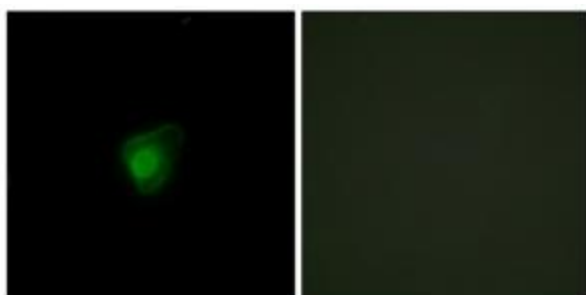


[View online »](#)

## Product images:



Western blot analysis of extracts from HeLa cells, Jurkat cells, 293 cells and HUVEC cells, using SMG7 antibody. The lane on the right is treated with the synthesized peptide.



Immunofluorescence analysis of HepG2 cells, using SMG7 antibody. The picture on the right is treated with the synthesized peptide.