

## Product datasheet for **TA314982**

### ZC3H11A Rabbit Polyclonal Antibody

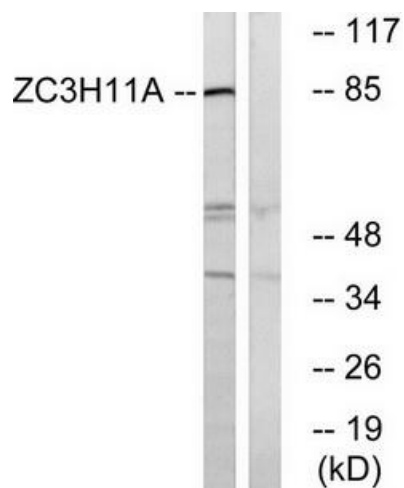
#### Product data:

Product Type:	Primary Antibodies
Applications:	WB
Recommended Dilution:	WB: 1:500~1:3000, ELISA: 1:20000
Reactivity:	Human, Mouse
Host:	Rabbit
Isotype:	IgG
Clonality:	Polyclonal
Immunogen:	The antiserum was produced against synthesized peptide derived from internal of human ZC11A.
Formulation:	Phosphate buffered saline (without Mg <sup>2+</sup> and Ca <sup>2+</sup> ), pH 7.4, 150mM NaCl, 0.02% sodium azide and 50% glycerol.
Concentration:	lot specific
Purification:	The antibody was affinity-purified from rabbit antiserum by affinity-chromatography using epitope-specific immunogen.
Conjugation:	Unconjugated
Storage:	Store at -20°C as received.
Stability:	Stable for 12 months from date of receipt.
Gene Name:	zinc finger CCCH-type containing 11A
Database Link:	<a href="#">NP_055642</a> <a href="#">Entrez Gene 70579 Mouse</a> <a href="#">Entrez Gene 9877 Human</a> <a href="#">O75152</a>
Synonyms:	ZC3HDC11A
Note:	ZC11A antibody detects endogenous levels of total ZC11A protein.



[View online »](#)

## Product images:



Western blot analysis of extracts from COS cells, using ZC11A antibody. The lane on the right is treated with the synthesized peptide.