

Product datasheet for **TA314979**

AIP1 (MAGI2) Rabbit Polyclonal Antibody

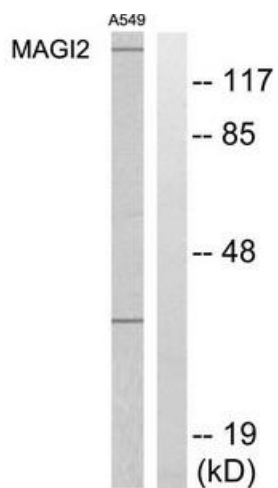
Product data:

| | |
|------------------------------|------------------------------------------------------------------------------------------------------------------------------------------------------------------------------|
| Product Type: | Primary Antibodies |
| Applications: | WB |
| Recommended Dilution: | WB: 1:500~1:3000, ELISA: 1:20000 |
| Reactivity: | Human, Mouse, Rat |
| Host: | Rabbit |
| Isotype: | IgG |
| Clonality: | Polyclonal |
| Immunogen: | The antiserum was produced against synthesized peptide derived from internal of human MAGI2. |
| Formulation: | Phosphate buffered saline (without Mg ²⁺ and Ca ²⁺), pH 7.4, 150mM NaCl, 0.02% sodium azide and 50% glycerol. |
| Concentration: | lot specific |
| Purification: | The antibody was affinity-purified from rabbit antiserum by affinity-chromatography using epitope-specific immunogen. |
| Conjugation: | Unconjugated |
| Storage: | Store at -20°C as received. |
| Stability: | Stable for 12 months from date of receipt. |
| Gene Name: | membrane associated guanylate kinase, WW and PDZ domain containing 2 |
| Database Link: | NP_036433 Entrez Gene 50791 Mouse Entrez Gene 113970 Rat Entrez Gene 9863 Human Q86UL8 |
| Synonyms: | ACVRIP1; AIP-1; AIP1; ARIP1; MAGI-2; SSCAM |
| Note: | MAGI2 antibody detects endogenous levels of total MAGI2 protein. |
| Protein Families: | Druggable Genome |
| Protein Pathways: | Tight junction |



[View online »](#)

Product images:



Western blot analysis of extracts from HT-29 cells, using MAGI2 antibody. The lane on the right is treated with the synthesized peptide.