

Product datasheet for **TA314977**

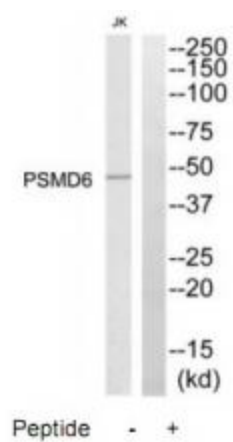
PSMD6 Rabbit Polyclonal Antibody

Product data:

Product Type:	Primary Antibodies
Applications:	WB
Recommended Dilution:	WB: 1:500~1:3000, ELISA: 1:40000
Reactivity:	Mouse, Human, Rat
Host:	Rabbit
Isotype:	IgG
Clonality:	Polyclonal
Immunogen:	The antiserum was produced against synthesized peptide derived from internal of human PSMD6.
Formulation:	Phosphate buffered saline (without Mg ²⁺ and Ca ²⁺), pH 7.4, 150mM NaCl, 0.02% sodium azide and 50% glycerol.
Concentration:	lot specific
Purification:	The antibody was affinity-purified from rabbit antiserum by affinity-chromatography using epitope-specific immunogen.
Conjugation:	Unconjugated
Storage:	Store at -20°C as received.
Stability:	Stable for 12 months from date of receipt.
Gene Name:	proteasome 26S subunit, non-ATPase 6
Database Link:	NP_055629 Entrez Gene 66413 Mouse Entrez Gene 289924 Rat Entrez Gene 9861 Human Q15008
Synonyms:	p42A; p44S10; Rpn7; S10; SGA-113M
Note:	PSMD6 antibody detects endogenous levels of total PSMD6 protein.
Protein Pathways:	Proteasome



[View online »](#)

Product images:

Western blot analysis of extracts from Jurkat cells, using PSMD6 antibody. The lane on the right is treated with the synthesized peptide.