

Product datasheet for **TA314975**

FARP2 Rabbit Polyclonal Antibody

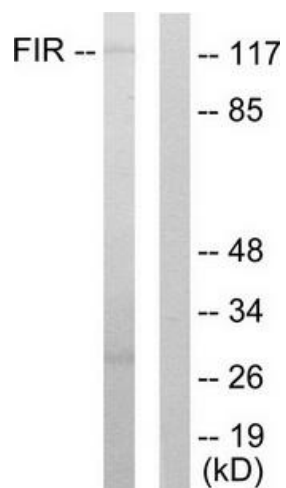
Product data:

Product Type:	Primary Antibodies
Applications:	WB
Recommended Dilution:	WB: 1:500~1:3000, ELISA: 1:20000
Reactivity:	Human, Mouse
Host:	Rabbit
Isotype:	IgG
Clonality:	Polyclonal
Immunogen:	The antiserum was produced against synthesized peptide derived from Internal of human FIR.
Formulation:	Phosphate buffered saline (without Mg ²⁺ and Ca ²⁺), pH 7.4, 150mM NaCl, 0.02% sodium azide and 50% glycerol.
Concentration:	lot specific
Purification:	The antibody was affinity-purified from rabbit antiserum by affinity-chromatography using epitope-specific immunogen.
Conjugation:	Unconjugated
Storage:	Store at -20°C as received.
Stability:	Stable for 12 months from date of receipt.
Gene Name:	FERM, ARH/RhoGEF and pleckstrin domain protein 2
Database Link:	NP_055623 Entrez Gene 227377 Mouse Entrez Gene 9855 Human O94887
Synonyms:	FIR; FRG; PLEKHC3
Note:	FIR antibody detects endogenous levels of total FIR protein.
Protein Pathways:	Adherens junction



[View online »](#)

Product images:



Western blot analysis of extracts from HuvEc cells, using FIR antibody. The lane on the right is treated with the synthesized peptide.