

## Product datasheet for **TA314974**

### JAKMIP2 Rabbit Polyclonal Antibody

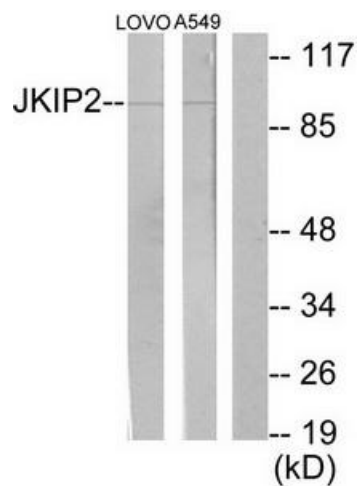
#### Product data:

Product Type:	Primary Antibodies
Applications:	IHC, WB
Recommended Dilution:	WB: 1:500~1:3000, IHC: 1:50~1:100, ELISA: 1:5000
Reactivity:	Human
Host:	Rabbit
Isotype:	IgG
Clonality:	Polyclonal
Immunogen:	The antiserum was produced against synthesized peptide derived from C-terminal of human Stathmin.
Formulation:	Phosphate buffered saline (without Mg <sup>2+</sup> and Ca <sup>2+</sup> ), pH 7.4, 150mM NaCl, 0.02% sodium azide and 50% glycerol.
Concentration:	lot specific
Purification:	The antibody was affinity-purified from rabbit antiserum by affinity-chromatography using epitope-specific immunogen.
Conjugation:	Unconjugated
Storage:	Store at -20°C as received.
Stability:	Stable for 12 months from date of receipt.
Gene Name:	janus kinase and microtubule interacting protein 2
Database Link:	<a href="#">NP_055605</a> <a href="#">Entrez Gene 9832 Human</a> <a href="#">Q96AA8</a>
Synonyms:	JAMIP2; NECC1
Note:	JKIP2 antibody detects endogenous levels of total JKIP2 protein.

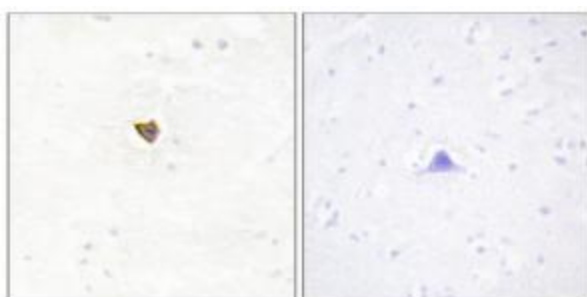


[View online »](#)

## Product images:



Western blot analysis of extracts from LOVO cells and A549 cells, using JKIP2 antibody. The lane on the right is treated with the synthesized peptide.



Immunohistochemistry analysis of paraffin-embedded human brain tissue using JKIP2 antibody. The picture on the right is treated with the synthesized peptide.